

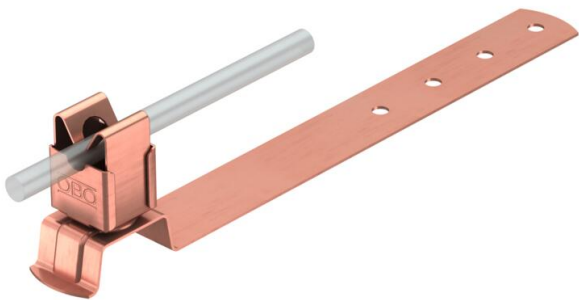
Technical data sheet

Roof conductor holder for tiled roofs, Rd 8

Item number: 5216257



- Conductor holder from copper plated stainless steel (V2A)
- Including drill hole in bottom section for quick installation



Cu Copper

Master data		
Item number	5216257	
Type	157 F-CU 410	
Description 1	Roof conductor holder	
Manufacturer	OBO	
Dimension	8mm	
Material	Copper	
Smallest sales unit	10	
Unit of quantity	Piece	
Weight	14.5 kg	
Weight unit	kg/100 pc.	
CO2 Footprint (GWP) Cradle-to-Gate	0,3493 kg CO2e / 1 Piece	

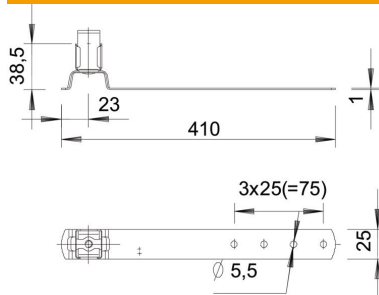
Technical data sheet

Roof conductor holder for tiled roofs, Rd 8

Item number: 5216257



Dimensions



Length	410 mm
Dimension L	410 mm

Technical data

Application	Roof surface
Conductor fastening type	With clip
Conductor diameter, max.	8
Conductor diameter, min.	8
Mounting type	Screw-on
Mounting height	38.5 mm
Fit	Rd 8 mm
Material of the holder	Copper
Material of the support	Copper