

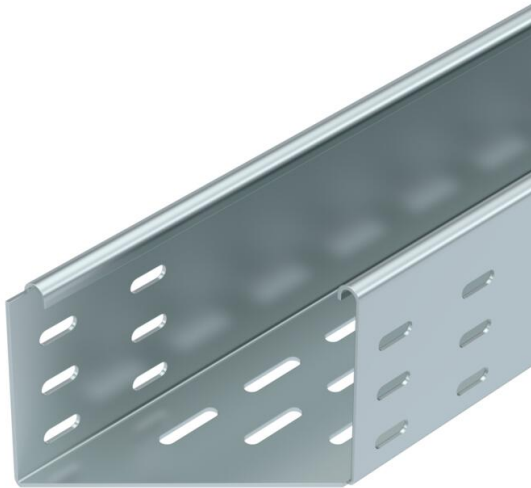
Technical data sheet

45° fitting, left, BKRS 100 FS

Item number: 6061911



Cable tray fitting with 45° cut, for creation of bends on walkable cable trays.



CE

- St** Steel
- FS** Strip galvanized

Master data

Item number	6061911
Type	BKRS 1010 45L FS
Description 1	Cable tray BKRS
Description 2	mitre left side
Manufacturer	OBO
Dimension	100x100x1000
Colour	zinc
Material	Steel
Surface	Strip galvanized
Surface standard	DIN EN 10346
Smallest sales unit	1
Unit of quantity	Piece
Weight	457.9 kg
Weight unit	kg/100 pc.
CO2 Footprint (GWP) Cradle-to-Gate	13,474 kg CO2e / 1 Piece

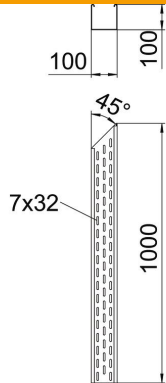
Technical data sheet

45° fitting, left, BKRS 100 FS

Item number: 6061911



Dimensions



Length	1,000 mm
Width	100 mm
Height	100 mm
Plate thickness	2 mm
Dimension B	100 mm
Dimension H	100 mm
Dimension L	1,000 mm

Technical data

Bend (angle)	45°
Connector version	Without connectors
Type	Bend, rigid
Walkable	yes
Maintain electrical functions	no
Mounting perforation in base	yes
NATO hole pattern	no
Change of direction	Horizontal
Rustproof steel, pickled	no
Side perforation	yes
Permitted temperature range, max.	120 °C
Permitted temperature range, min.	-20 °C
Wide-span version	no
Type of connector, cable support system	Screwed