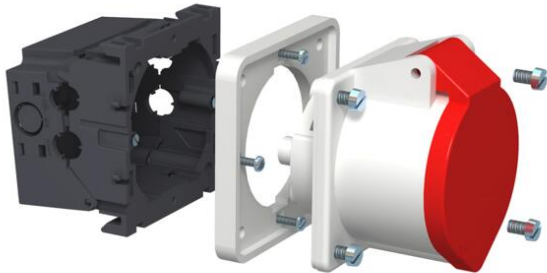


Technical data sheet

Accessory mounting box CEE, 32 A

Item number: 6288614



Accessory mounting box, complete, for the installation of a CEE connection device in device installation trunking with 80 mm cover, consisting of:

- Front locking device installation trunking
- CEE connection unit and mounting material
- CEE socket 32 A

For installation in Rapid 80 device installation trunking and ISS service poles.

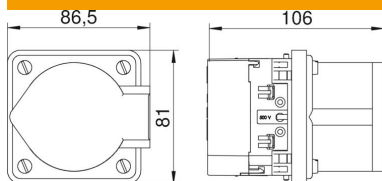


PA Polyamide

Master data

| | |
|------------------------------------|--------------------------|
| Item number | 6288614 |
| Type | CEE32E2 |
| Description 1 | CEE mounting box |
| Description 2 | with CEE32 |
| Manufacturer | OBO |
| Colour | Iron grey; RAL 7011 |
| Material | Polyamide |
| Smallest sales unit | 1 |
| Unit of quantity | Piece |
| Weight | 37 kg |
| Weight unit | kg/100 pc. |
| CO2 Footprint (GWP) Cradle-to-Gate | 0,4084 kg CO2e / 1 Piece |

Dimensions



Technical data

| | |
|-----------------------------|--------|
| Number of units | 1 |
| Version for | Closed |
| Fastening track | Other |
| Halogen-free | no |
| With connection compartment | yes |
| Strain relief option | no |