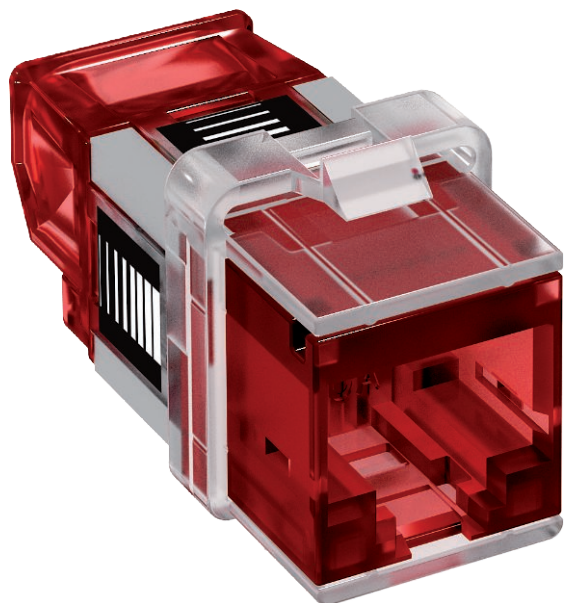


Technical data sheet

Connection module Cat. 6A, unshielded, snap-in

Item no. 6117348



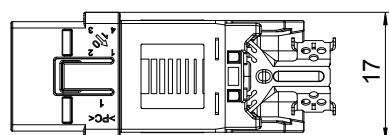
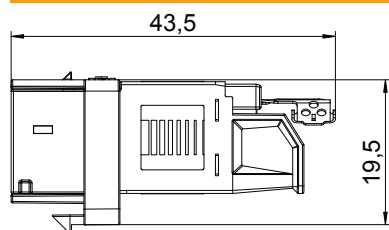
Connection module Cat. 6A (ISO) unshielded, with an RJ45 slot. Including a dust cover, a cable tie, a Keystone fastening frame and mounting instructions. Suitable for installation in the data technology supports of type DTG-2C and DTS-2C, support plate of type MTM 2C and MTM 3C, mounting plate of type MPR2 2C, mounting supports of type MTGE2 2C, MTGE2 15 2C and MTGE2 F 2C.

CE

Master data

Item no.	6117348
Type	ASM-C6A
Description 1	Connection module CAT 6A
Description 2	unshielded
Colour	Grey
Smallest sales unit (VG)	1 Piece
Weight	1,05 kg/100 pc.

Technical data



Mounting opening	Type C
------------------	--------