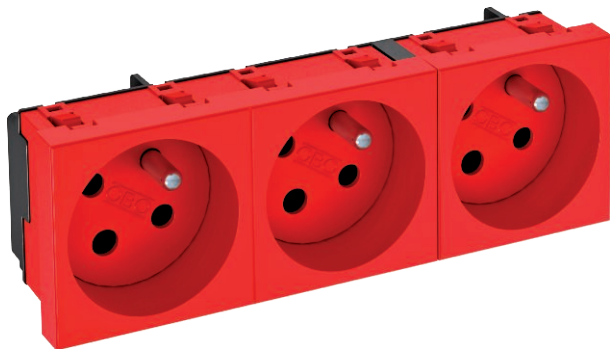


# Technical data sheet

## 33° socket, with earthing pin, encoded version, triple

Item no. 6120326



Socket with earthing pin triple 33°, encoded version, with increased touch protection, with screwless terminals, 2-pin, 16 A, 250 V~, with connection terminals to IEC 60884-1. The socket can only be used in conjunction with an encoding pin, type CST-STD.

Note: The encoding pin is not contained in the scope of supply.

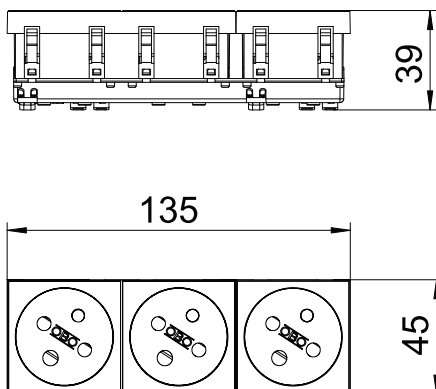
For installation in Rapid 45 trunking, device installation trunking, service poles, underfloor systems and desk boxes.

**PC** Polycarbonate

### Master data

Item no.	6120326
Type	STD-F3K SR03
Description 1	Socket 33°, triple, coded
Description 2	with earth pin
Dimension	250V, 10/16A
Colour	Signal red
RAL number	3001
Material	Polycarbonate
Material symbol	PC
Smallest sales unit (VG)	1 Piece
Weight	10,50 kg/100 pc.

### Technical data



Width	135,00 mm
Height	45,00 mm
Depth	39,00 mm
Cover	Central plate
Closable	<input type="checkbox"/>
Connection type	Screwless terminal
Printed label/coding	Without printing
Version	triple 33°
Version	Socket 33°, triple, coded, with earth pin
Surface version	Matt
Sockets/switch version	Protective contact pin
Version for	Protective contact pin
Number of poles	2
Number of units	3
Number of modules (for modular construction)	0
Number of switchable sockets	0
Ejection mechanism	<input type="checkbox"/>
Fastening type	Lock
Labelling panel	<input type="checkbox"/>
Operating temperature	-5,00 - 40,00 °C
Error current protection	<input type="checkbox"/>
For more difficult conditions (according to VDE)	<input type="checkbox"/>
Halogen-free	<input checked="" type="checkbox"/>
Insulated installation	<input type="checkbox"/>
Increased touch protection	<input checked="" type="checkbox"/>
Hinged cover	<input type="checkbox"/>
Coding	Yes
Warning light	<input type="checkbox"/>
With on/off switch	<input type="checkbox"/>

# Technical data sheet

33° socket, with earthing pin, encoded version, triple

Item no. 6120326



## Technical data

With fine-wire fuse	<input type="checkbox"/>
With functional lighting	<input type="checkbox"/>
With orientation lighting	<input type="checkbox"/>
Mounting type	Device installation duct
Nominal voltage	250,00 V
Nominal current	16,00 A
Protection rating	Other
Special power supply	Without special power supply
Socket version	NF
Socket angle	33°
Transparent	<input type="checkbox"/>
Surge protection	<input type="checkbox"/>
Rotated central insert	<input checked="" type="checkbox"/>