

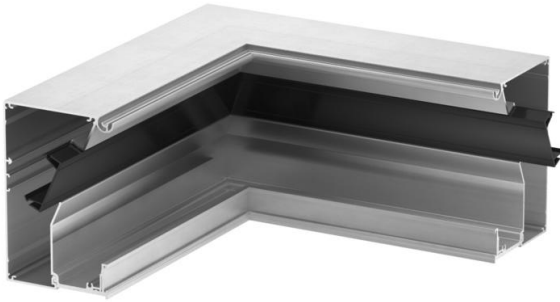
Technical data sheet

Internal corner, design trunking

Item number: 6115795



Internal corner base to create a design device installation trunking of the GAD series. 45 mm system opening for acceptance of Modul 45 switch and connection devices and appropriate PVC and aluminium covers of the Rapid 45 series. The fitting can be completed with fitting covers in the "Swing", "Soft" or "Style" design. The GAD OTA cover adapters are essential. A GAD OTD spacer must be placed between the trunking covers. Standard version in anodised aluminium, different decoration on request.



- Alu** Aluminium
- EL** Anodised

Master data

| | |
|---------------------|------------------------------|
| Item number | 6115795 |
| Type | GAD IEL |
| Description 1 | Internal corner, Design duct |
| Description 2 | without cover |
| Manufacturer | OBO |
| Dimension | 114x140x300 |
| Material | Aluminium |
| Surface | Anodised |
| Surface standard | |
| Smallest sales unit | 1 |
| Unit of quantity | Piece |
| Weight | 183 kg |
| Weight unit | kg/100 pc. |

Technical data sheet

Internal corner, design trunking

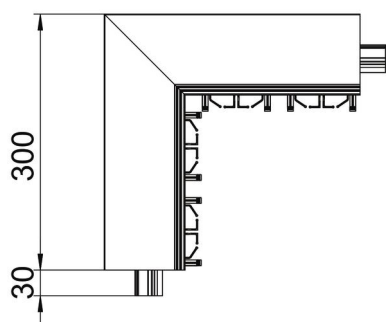
Item number: 6115795



Dimensions



| | |
|--------|--------|
| Length | 300 mm |
| Width | 140 mm |
| Height | 114 mm |



Technical data

| | |
|------------------------------|--------------|
| Number of covers | 1 |
| Version for | Base |
| Shape | Asymmetrical |
| Halogen-free | yes |
| Cable retaining clip | no |
| Duct connector | no |
| Cover mounting type | Cross-over |
| Mounting perforation in base | no |
| Cover width | 140 mm |
| Protective film | yes |
| Angle range, min. | 90 mm |