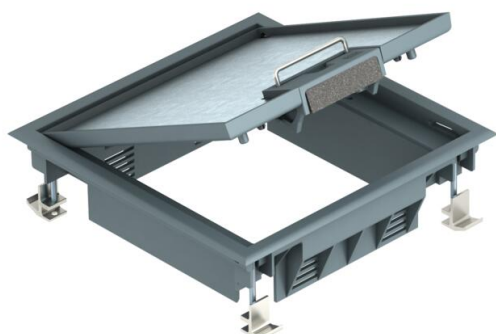


# Technical data sheet

## GES4 service outlet, used in raised floors

Item number: 7405164



Service unit for 4 installation devices in 2 UT universal supports for use in raised floors for indoor use. Fastening bracket in a clamping range of up to 50 mm plate thickness.

Carpet protection frame, hinged lid and cord outlet made of polyamide.

5 mm floor covering recess in the hinged lid.  
Up to 4 installation devices can be used with 50 mm central plate.

Can also be used in conjunction with the MT mounting support. Two APMT5 cover plates can be installed for 4 installation devices. The number of installable installation devices depends on the type of installation devices.



PA Polyamide

### Master data

Item number	7405164
Type	GES4 DB 7011
Description 1	Service outlet
Description 2	for raised floor mounting
Manufacturer	OBO
Dimension	222x222x65
Colour	Iron grey; RAL 7011
Material	Polyamide
Smallest sales unit	1
Unit of quantity	Piece
Weight	139.5 kg
Weight unit	kg/100 pc.
CO2 Footprint (GWP) Cradle-to-Gate	2,245 kg CO2e / 1 Piece

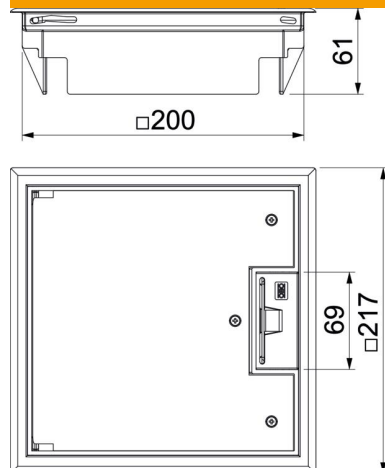
# Technical data sheet

## GES4 service outlet, used in raised floors

Item number: 7405164



### Dimensions



### Technical data

Number of mounting boxes	2
Version for	Square
Cable outlet version	Swivellable cord outlet
Floor covering protection frame	yes
Floor care	Dry
Seal installation option	no
Floor height, min.	73 mm
Suitable for raised floor installation	yes
Suitable for screed-flush closed underfloor ducts	no
Suitable for cavity floor installation	yes
Suitable for wet care	no
Suitable for underfloor box	250/350
Suitable for underfloor ducts	no
Device support to accept mounting boxes	yes
Length of external dimensions	217 mm
Length of installation dimensions	200 mm
With floor covering recess	yes
Frame version	Carpet protection frame
Protection rating (IP) when used	IP20
Protection rating (IP) when unused	IP40
Protection rating IK code	IK08
Heavy-duty version	no
Clamping range D, max.	59 mm
Clamping range D, min.	22 mm
Approvals	VDE
Opening mechanism	Handle
Floor covering thickness	5 mm