

# Technical data sheet

## Connection plate with 2 holes A2

Item number: 1124685



Connection plate with two holes for straight connection of profile rails 41 x 41 mm and 41 x 21 mm.



**A2** Stainless steel

**2B** Bright, treated

### Master data

Item number	1124685
Type	GMS 2 VP A2
Description 1	Connection plate
Description 2	with 2 holes
Manufacturer	OBO
Dimension	100x40x4
Material	Stainless steel 1.4301
Surface	Bright, treated
Surface standard	
Smallest sales unit	10
Unit of quantity	Piece
Weight	11.5 kg
Weight unit	kg/100 pc.
CO2 Footprint (GWP) Cradle-to-Gate	0,5529 kg CO2e / 1 Piece

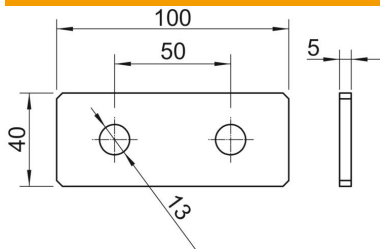
# Technical data sheet

## Connection plate with 2 holes A2

Item number: 1124685



### Dimensions



Length	100 mm
Width	40 mm
Height	4 mm

### Technical data

Version for	With continuous perforation 13 mm
Version for	Internal connector
Suitable for profile shapes	C profile
Hole size	13 mm
Material thickness	4 mm
With screw accessories	no
Rustproof steel, pickled	no