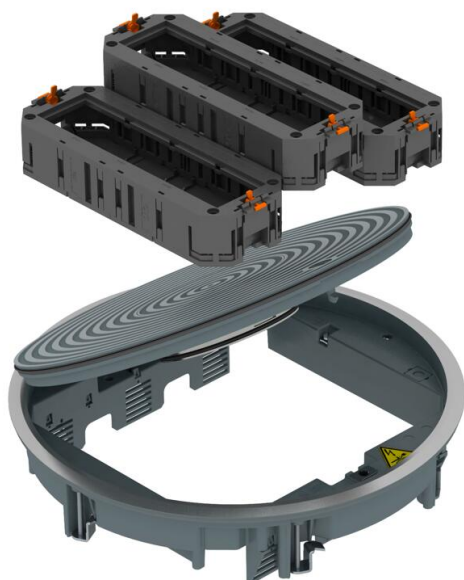


Technical data sheet

GRAF9-2 service outlet with UT4 45

Item number: 7429604



Cast aluminium

GRAF9 service outlet for wet-care floors with all necessary system accessories for direct installation in raised floors for indoor use.

The scope of delivery contains:

- GRAF9 service outlet with universal fastening bracket,
- Three UT4/45 universal supports, each for four Modul 45® devices.

Hinged lid with concentric rings. Surface: bare metal with a finely scored structure, recesses painted in the colour RAL 9011, graphite black.

Floor covering protection frame and hinged lid made of die-cast aluminium, tube body made of polyamide.

The minimum installation depth is 75 mm (when using two UT4/45 universal supports) or 110 mm (when using the middle universal support).

Master data

Item number	7429604
Type	GRAF9-2 KU 7011
Description 1	Service outlet construct. set
Description 2	for universal mounting
Manufacturer	OBO
Dimension	Ø325X78
Colour	Iron grey; RAL 7011
Material	Cast aluminium
Smallest sales unit	1
Unit of quantity	Piece
Weight	307.5 kg
Weight unit	kg/100 pc.
CO2 Footprint (GWP) Cradle-to-Gate	5,8817 kg CO2e / 1 Piece

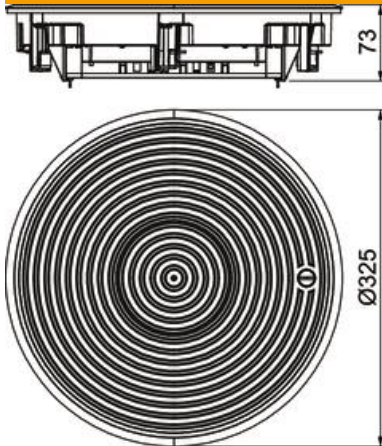
Technical data sheet

GRAF9-2 service outlet with UT4 45

Item number: 7429604



Dimensions



Technical data

Cable outlet version	Lowerable tube body
Protection rating (IP) when used	IP20
Protection rating (IP) when unused	IP45
Protection rating IK code	IK10
Clamping range D, max.	73 mm
Clamping range D, min.	4 mm
Opening mechanism	Sash lock