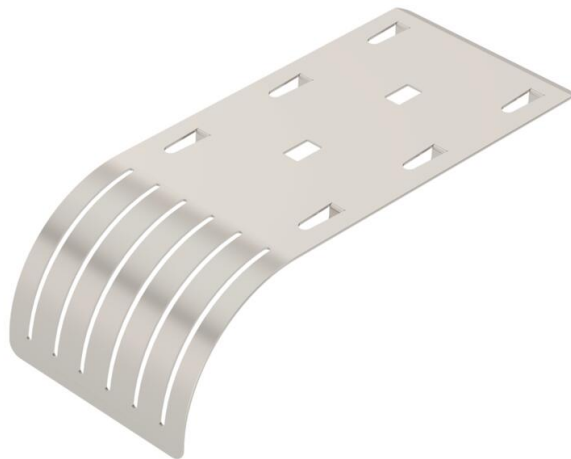


Technical data sheet

Drop-out plate A2

Item number: 6220145



Drop-out plate for mesh cable trays.

The exit plate allows compliance with specific bend radii, thus preventing possible cable breaks. Can be mounted in a lengthwise direction and at the side, can be arranged for greater widths.



A2 Stainless steel

2B Bright, treated

Master data

Item number	6220145
Type	KAB GR A2
Description 1	Cable exit plate
Description 2	for mesh cable tray
Manufacturer	OBO
Dimension	192x85x51
Colour	stainless steel
Material	Stainless steel 1.4301
Surface	Bright, treated
Surface standard	
Smallest sales unit	10
Unit of quantity	Piece
Weight	14.1 kg
Weight unit	kg/100 pc.
CO2 Footprint (GWP) Cradle-to-Gate	0,8644 kg CO2e / 1 Piece

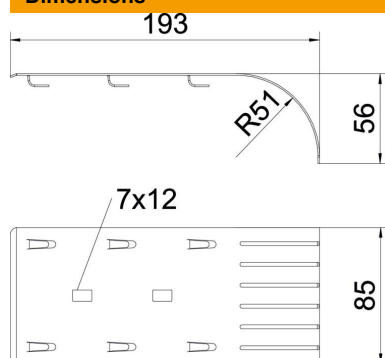
Technical data sheet

Drop-out plate A2

Item number: 6220145



Dimensions



Length	193 mm
Width	85 mm
Width	3.47 in

Technical data

Maintain electrical functions	no
Rustproof steel, pickled	no
Wide-span version	no