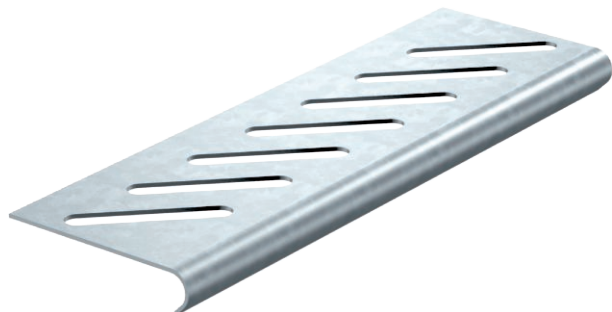


Technical data sheet

Bottom end plate

Item no. 7083626



Bottom end plate for floor reinforcement at the ends of the cable tray and as cable protection.
For fastening, please order screws, type FRSB M6x12, separately.



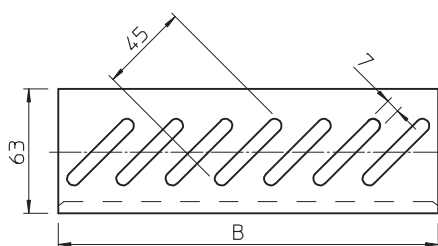
St Steel

DD Strip galvanised zinc/aluminium, Double Dip

Master data

Item no.	7083626
Type	BEB 200 DD
Description 1	Bottom end plate
Description 2	for cable tray
Dimension	B200mm
Material	Steel
Material symbol	St
Surface	Strip galvanised zinc/aluminium, Double Dip
Surface to DIN	DIN EN 10346
Surface symbol	DD
Smallest sales unit (VG)	1 Piece
Weight	9,37 kg/100 pc.

Technical data



Width	200,00 mm
Dimension B	200,00 mm
Suitable for maintaining electrical function	<input type="checkbox"/>
Rustproof steel, pickled	<input type="checkbox"/>
Wide-span version	<input type="checkbox"/>