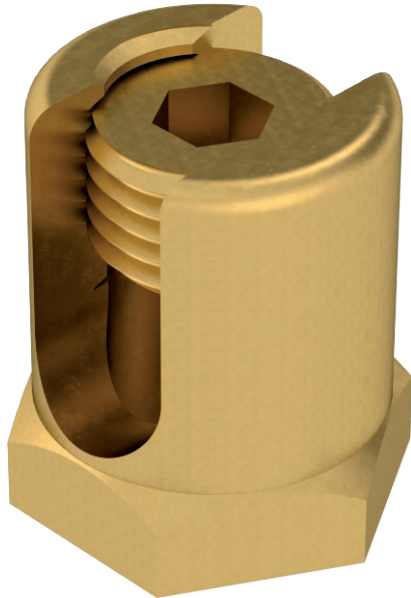


Technical data sheet

Earthing terminal with fastening thread

Item no. 6404016



Earthing terminal for the fastening of the equipotential bonding conductor on the cable tray system. Threaded pin M14, Allen key slot with a width of 6 mm.

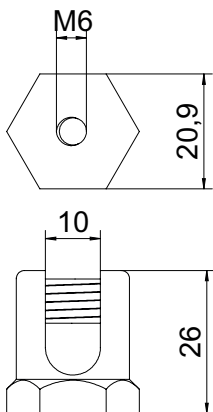


 Brass

Master data

Item no.	6404016
Type	EKL 35 M6 ISK
Description 1	Earthing terminal
Description 2	with fastening thread M6
Dimension	35mm ²
Material	Brass
Material symbol	CuZn
Smallest sales unit (VG)	50 Piece
Weight	4,80 kg/100 pc.

Technical data



Width	21,00 mm
Height	26,00 mm
Suitable for cable tray	<input checked="" type="checkbox"/>
Suitable for mesh cable tray	<input type="checkbox"/>
Suitable for cable ladder	<input checked="" type="checkbox"/>
Suitable for maintaining electrical function	<input type="checkbox"/>
Thread	M6
With screw accessories	<input type="checkbox"/>
Cross-section	70,00 mm ²
Rustproof steel, pickled	<input type="checkbox"/>
Connection type	With pin/drill hole