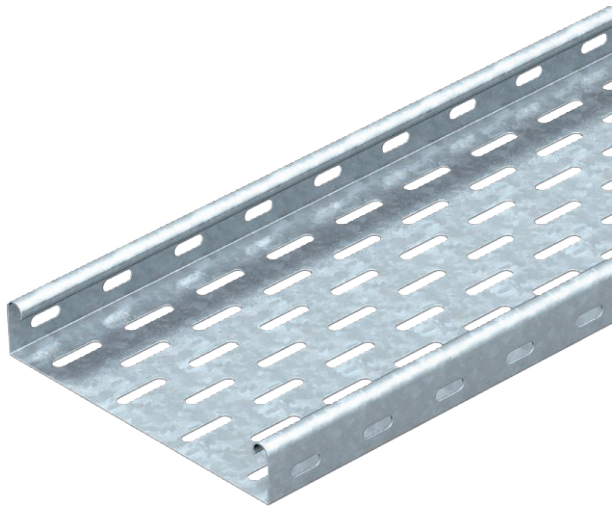


Technical data sheet

Cable tray MKS 35

Item no. 6053599



MKS 35 = Medium duty cable tray system with a side height of 35 mm.

FS version includes RV 35 straight connector set.

Magnetic shield insulation without cover 20 dB, with cover 50 dB.



St Steel

FS Strip galvanised

Master data

Item no.	6053599
Type	MKS 320 FS
Description 1	Cable tray MKS
Description 2	perforated, with connector set
Manufacturer	OBO
Dimension	35x200x3000
Material	Steel
Material symbol	St
Surface	Strip galvanised
Surface to DIN	DIN EN 10346
Surface symbol	FS
Smallest sales unit (VG)	3 m
Weight	210,03 kg/100 m

Technical data

Usable cross-section	6.800,00 mm ²
Usable cross-section	68,00 cm ²
Suitable for maintaining electrical function	<input type="checkbox"/>
Connector version	Supplied connectors
Base perforation	1
With cover	<input type="checkbox"/>
Mounting perforation in base	<input checked="" type="checkbox"/>
NATO hole pattern	<input type="checkbox"/>
Rustproof steel, pickled	<input type="checkbox"/>
Side perforation	<input checked="" type="checkbox"/>
Wide-span version	<input type="checkbox"/>

Technical data sheet

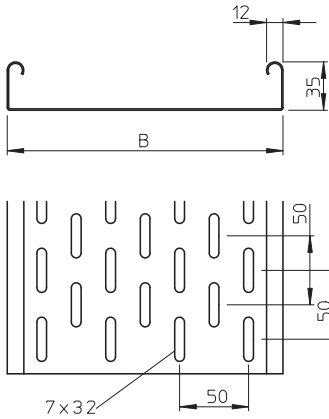
Cable tray MKS 35

Item no. 6053599



Technical data

Dimensions

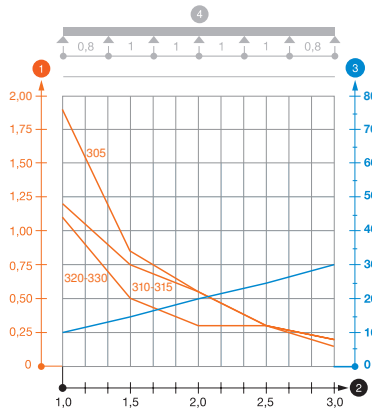


Length	3.000,00 mm
Width	200,00 mm
Height	35,00 mm
Side height	35,00 mm
Dimension B	200,00 mm
Plate thickness	1,00 mm

Appr. load:

Support spacing 1.0 m	1,10 kN/m
Support spacing 1.5 m	0,50 kN/m
Support spacing 2.0 m	0,30 kN/m
Support spacing 2.5 m	0,30 kN/m
Support spacing 3.0 m	0,20 kN/m

Load diagram, cable tray, type MKS 35



- 1 Permitted cable tray/ladder load in kN/m without man load
- 2 Support width in m
- 3 Rail bend in mm at permitted kN/m
- 4 Load scheme during testing
- Load curve with cable tray/ladder width in mm
- Strut bend curve according to support width