

# Technical data sheet

## SLL 60 medium-duty vertical ladder, 6 m

Item no. 6010626



Vertical ladder with a side height of 60 mm with riveted C profile rungs, open in upwards direction.

Fastening takes place directly on the wall or using the wall brackets, type WB 30/75. The slot dimension of the rung is 18 mm and the appropriate clamp clip is type 2056U.



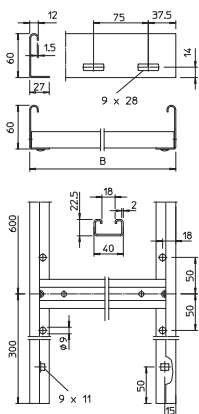
**St** Steel

**FS** Strip galvanised

### Master data

Item no.	6010626
Type	SLL 650 CPS 4 FS
Description 1	Medium duty vertical ladder
Description 2	with CPS rung
Manufacturer	OBO
Dimension	60x500x6000
Material	Steel
Material symbol	St
Surface	Strip galvanised
Surface to DIN	DIN EN 10346
Surface symbol	FS
Smallest sales unit (VG)	6 m
Weight	353,27 kg/100 m

### Technical data



Length	6.000,00 mm
Width	500,00 mm
Side height	60,00 mm
Side wall version	Flat profile
Rung version	Profile perforated
Suitable for maintaining electrical function	<input type="checkbox"/>
Rail thickness	1,50 mm
Usable cross-section	19.000,00 mm <sup>2</sup>
Usable cross-section	190,00 cm <sup>2</sup>
Rustproof steel, pickled	<input type="checkbox"/>
Side perforation	<input checked="" type="checkbox"/>
Rung distance	600,00 mm