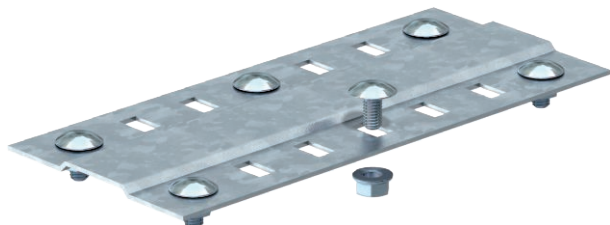


Technical data sheet

Joint plate

Item no. 7070314



Wide joint plate for use in all cable trays and wide span cable trays.
Including appropriate fastening material.



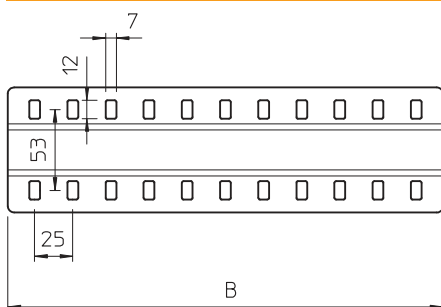
St Steel

DD Strip galvanised zinc/aluminium, Double Dip

Master data

Item no.	7070314
Type	SSLB 200 DD
Description 1	Joint plate
Description 2	wide, with 2 fastenings
Dimension	B200mm
Material	Steel
Material symbol	St
Surface	Strip galvanised zinc/aluminium, Double Dip
Surface to DIN	DIN EN 10346
Surface symbol	DD
Smallest sales unit (VG)	20 Piece
Weight	18,50 kg/100 pc.

Technical data



Width	185,00 mm
Width	8,00 in
Height	4,00 mm
Side height	35,00 mm
Dimension B	200,00 mm
Version	Joint plate
Quantity of bolts	2,00 pc.
Plate thickness	1,50 mm
Suitable for cable tray	<input checked="" type="checkbox"/>
Suitable for maintaining electrical function	<input type="checkbox"/>
Rustproof steel, pickled	<input type="checkbox"/>
Connection type	Screw connector
Wide-span version	<input checked="" type="checkbox"/>