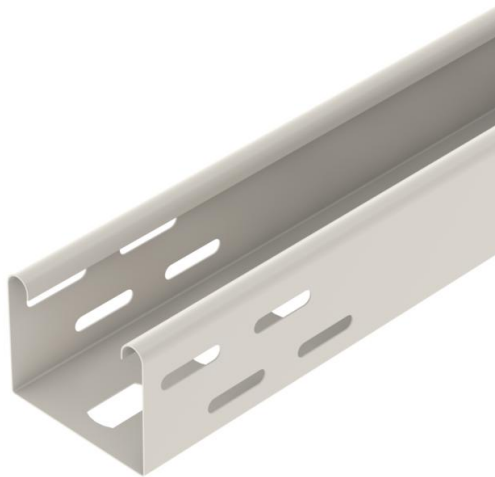


# Technical data sheet

## Luminaire support tray, pure white

Item number: 6055821



Luminaire support tray with perforated base for fastening luminaires and cable penetration.  
The luminaire support tray's surface is strip-galvanised and is also powder-coated in white (RAL 9010).  
Magnetic shield insulation without cover 20 dB, with cover 50 dB.



<b>St</b>	Steel
<b>PE50</b>	PES50 - Polyester/epoxy

### Master data

Item number	6055821
Type	LTR 6000 FSK RW
Description 1	Light support tray
Manufacturer	OBO
Dimension	60x75x6000
Colour	Pure white; RAL 9010
Material	Steel
Surface	PES50 - Polyester/epoxy
Surface standard	
Smallest sales unit	6
Unit of quantity	Metre
Weight	132.033 kg
Weight unit	kg/100 m
CO2 Footprint (GWP) Cradle-to-Gate	2,8026 kg CO2e / 1 Meter

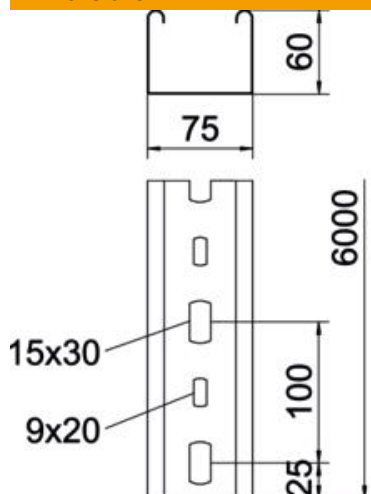
# Technical data sheet

## Luminaire support tray, pure white

Item number: 6055821



### Dimensions



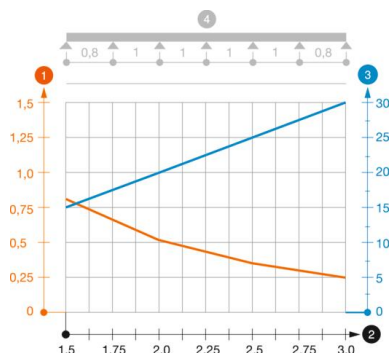
Length	6,000 mm
Width	75 mm
Height	60 mm
Plate thickness	0.75 mm

### Technical data

Connector version	Without connectors
Mounting perforation in base	yes
Usable cross-section	42 cm²
Rustproof steel, pickled	no
Side perforation	yes
Load test type according to IEC 61537	Type II
Type of connector, cable support system	Screwed

### Loads

Support spacing 1.5 m	0.8 kN/m
Support spacing 2.0 m	0.55 kN/m
Support spacing 2.5 m	0.35 kN/m
Support spacing 3.0 m	0.25 kN/m



### Load diagram, luminaire support tray, type LTR

- 1 Permitted cable tray/ladder load in kN/m without man load
- 2 Support width in m
- 3 Rail bend in mm at permitted kN/m
- 4 Load scheme during testing
- Load curve with cable tray/ladder width in mm
- Strut bend curve according to support width