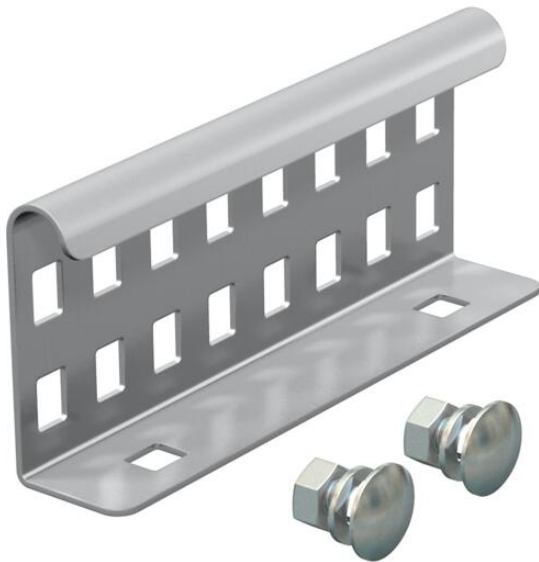


Technical data sheet

Straight connector A4

Item number: 6208835



Straight connector as external connector to connect cable ladders and fittings with a side height of 60 mm and continuous rail perforation. The bolt fastening ensures the continuity of the equipotential bonding.



A4	Stainless steel
2B	Bright, treated

Master data

Item number	6208835
Type	LVG 60 A4
Description 1	Straight connector
Description 2	for cable ladder
Manufacturer	OBO
Dimension	64x150
Colour	stainless steel
Material	Stainless steel
Surface	Bright, treated
Surface standard	
Smallest sales unit	10
Unit of quantity	Piece
Weight	20 kg
Weight unit	kg/100 pc.
CO2 Footprint (GWP) Cradle-to-Gate	1,2579 kg CO2e / 1 Piece

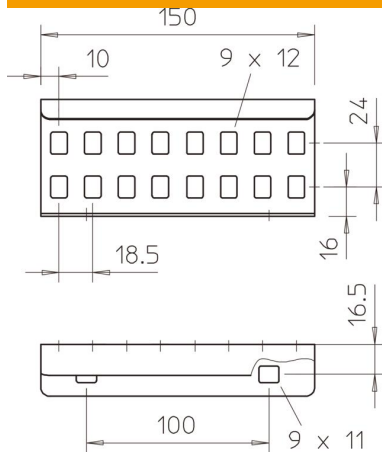
Technical data sheet

Straight connector A4

Item number: 6208835



Dimensions



Dimension	64x150
Length	150 mm
Width	28 mm
Height	60 mm
Plate thickness	1.5 mm

Technical data

Version for	Straight connector
Suitable for mesh cable tray	no
Suitable for cable ladder	yes
Suitable for cable tray	no
Suitable for cable tray system height	60 mm
Adjustable connector, horizontal	no
Articulated connector, vertical	no
Rustproof steel, pickled	no
Connection type	Screw connector