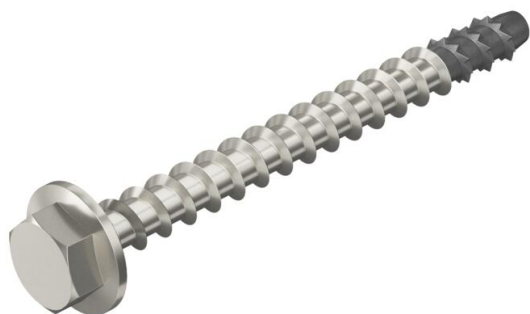


Technical data sheet

MMS-plus SS 12x120 hexagonal tie, with pressed washer,
made of A4 stainless steel
Item number: 3498176



Stainless steel screw-in anchor for direct mounting without additional anchors in cracked and uncracked concrete and masonry. With hex head drive and pressed washer to accept large loads. Suitable for fastening suspended loads from suspended supports and wall brackets in wet rooms and in outdoor areas.

Construction product tested according to EAD and CE mark, with European Technical Assessment (ETA) and proof of suitability. Load-bearing capacities under fire loads proven up to fire resistance class R120.



A4 Stainless steel

Master data

Item number	3498176
Type	MMS+ SS12x120 A4
Description 1	Hexagon head anchor
Description 2	with combined washer
Manufacturer	OBO
Dimension	12x120mm
Colour	stainless steel
Material	Stainless steel 1.4401
Smallest sales unit	25
Unit of quantity	Piece
Weight	9.4 kg
Weight unit	kg/100 pc.

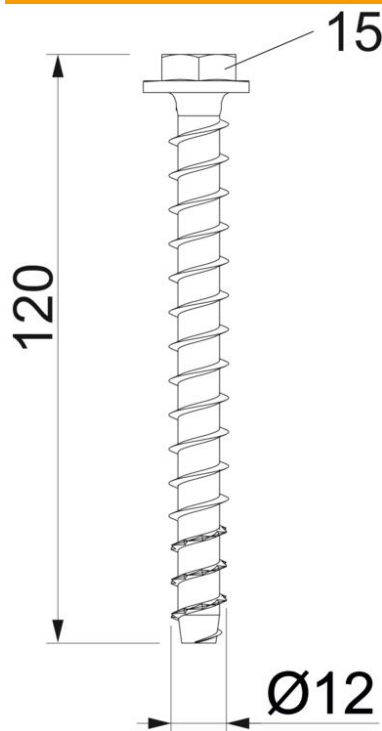
Technical data sheet

MMS-plus SS 12x120 hexagonal tie, with pressed washer,
made of A4 stainless steel

Item number: 3498176



Dimensions



Dimension	12x120
Length	120 mm
Dimension L	120 mm

Technical data

Anchor/nail/bolt version	Spiral anchor
Drill hole depth	110 mm
Drill hole diameter, min.	10 mm
Hardened	yes
Thread	12
Thread diameter ST	12
Clamping strength	30 mm
Head diameter	22 mm
Head shape	Hexagonal
WAF	15
Screw system	Hexagonal
Fire resistance class EN 13501-1	R30 R60 R90 R120