

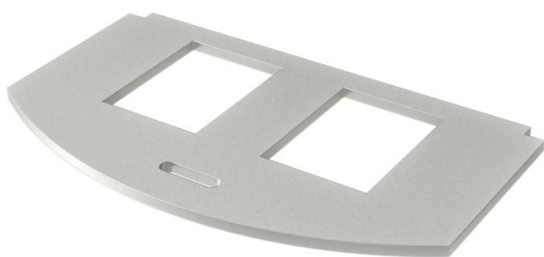
Technical data sheet

Mounting plate for data technology, type A

Item number: 7408802



Mounting plate to accept two data connection modules of the following types:
AMP TYCO: Standard 110Connect, SL Series 110Connect and Toolless, AMP-Twist; Brand-Rex: unshielded; GG45; TKM RJ MOD; Nexans: LANmark with Adapter-Clip; Siemon CAT6; 3M K6 and K10.
Dimensions of a mounting opening in mm: 20.10 x 14.80.

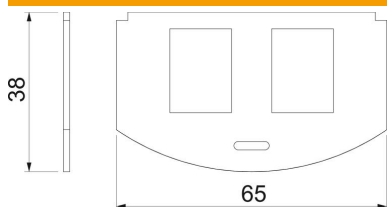


A2 Stainless steel

Master data

Item number	7408802
Type	MP R2 2A
Description 1	Mounting plate for GES R2
Description 2	for 2x Typ A
Manufacturer	OBO
Material	Stainless steel
Smallest sales unit	1
Unit of quantity	Piece
Weight	1.96 kg
Weight unit	kg/100 pc.

Dimensions



Length	65 mm
Width	36 mm

Technical data sheet

Mounting plate for data technology, type A

Item number: 7408802



Technical data

Application	Mounting box
Number of CEE/Perilex openings	0
Number of triple openings	0
Number of installable devices	2
Number of single openings	2
Number of oval openings	0
Number of square openings	0
Number of round openings	0
Number of double openings	0
Fastening type	Lockable
Labelling panel	no
Blanking lid	no
Suitable for labelling panel	no
Device type	Miscellaneous
Installation technology	Miscellaneous