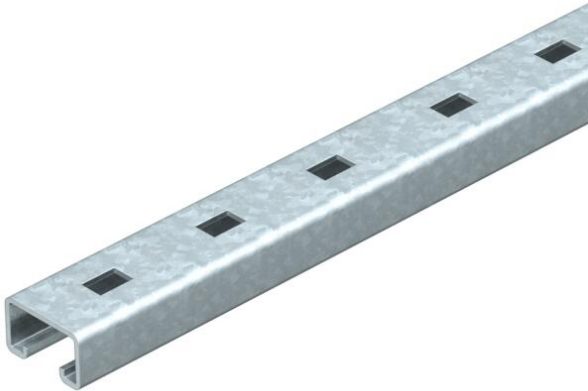


Technical data sheet

MS5030 mounting rail, slot 22 mm, FT, perforated

Item number: 6349439



Heavy-duty C profile rail for individual installation of support constructions, e.g. for cable trays or as a panel for switchgear cabinets. Can also be used for cable routing, in conjunction with clamp clips with a U foot.



- St Steel
- FT Hot-dip galvanised

Master data	
Item number	6349439
Type	MS5030RP0300FT
Description 1	Profile rail
Description 2	perforated, slot 22mm
Manufacturer	OBO
Dimension	300x50x30
Material	Steel
Surface	Hot-dip galvanised
Surface standard	DIN EN ISO 1461
Smallest sales unit	1
Unit of quantity	Piece
Weight	94 kg
Weight unit	kg/100 pc.
CO2 Footprint (GWP) Cradle-to-Gate	1,876 kg CO2e / 1 Piece

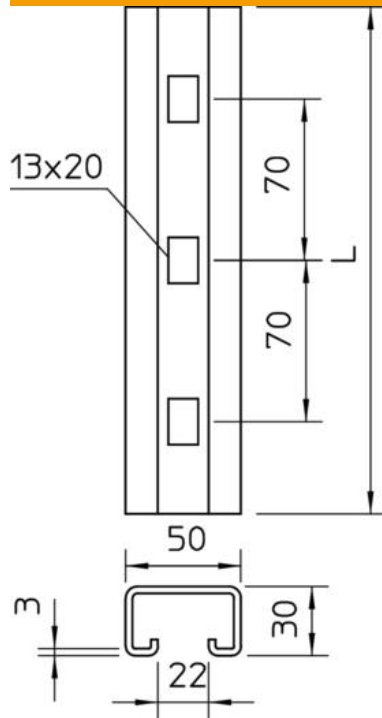
Technical data sheet

MS5030 mounting rail, slot 22 mm, FT, perforated

Item number: 6349439



Dimensions



Length	300 mm
Width	50 mm
Height	30 mm
Dimension L	300 mm

Technical data

Breakable	no
Type of perforation	Perforated back
Version for	Single profile
Drill hole spacing, centre	70 mm
Material thickness	3 mm
With perforation	yes
With tothing	no
Profile shape	C profile
Slot width	22 mm
Static value A	3.39 cm ²
Static value I _y	3.99 cm ⁴
Static value I _z	13.11 cm ⁴
Static value W _y	3.95 cm ³
Static value W _z	6.38 cm ³