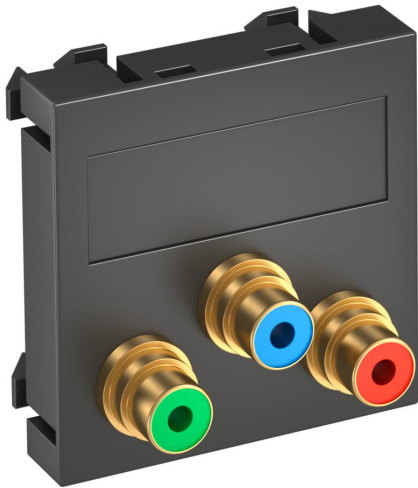


Technical data sheet

Component video connection, 1 module, straight outlet, as soldered connection, black-grey
Item number: 6105117



Multimedia support with three cinch connection sockets for component video, straight cable outlet, with labelling panel, three cinch sockets (RCA) with soldered connection, colour coding red / green / blue. Support plate with locking fastening, suitable for horizontal and vertical installation in the system environment.

PC Polycarbonate

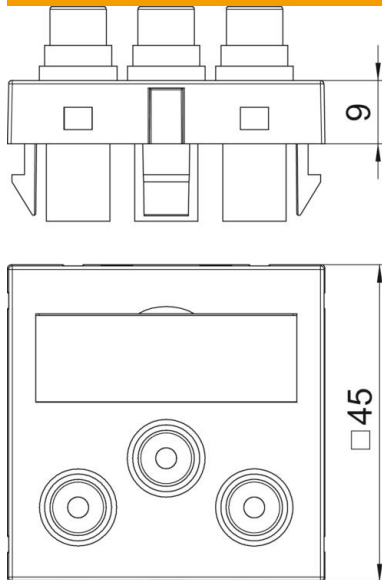
Master data	
Item number	6105117
Type	MTG-3R L SWGR1
Description 1	Multimedia support video cinch
Description 2	3xsocket with sold. connection
Manufacturer	OBO
Dimension	45x45mm
Colour	Black-grey; RAL 7021
Material	Polycarbonate
Smallest sales unit	1
Unit of quantity	Piece
Weight	3.2 kg
Weight unit	kg/100 pc.
CO2 Footprint (GWP) Cradle-to-Gate	0,0737 kg CO2e / 1 Piece

Technical data sheet

Component video connection, 1 module, straight outlet, as soldered connection, black-grey
Item number: 6105117



Dimensions



Technical data

Number of units	1
Surface version	Matt
Fastening type	Lock
Halogen-free	yes
Hinged cover	no
Lamp-wire connector	no
With printed label	no
With dust protection	no
Protection rating	IP20
Support ring	no
Transparent	no
Use	Cinch
Strain relief option	no
Combination	Basic element with central cover plate