

# Technical data sheet

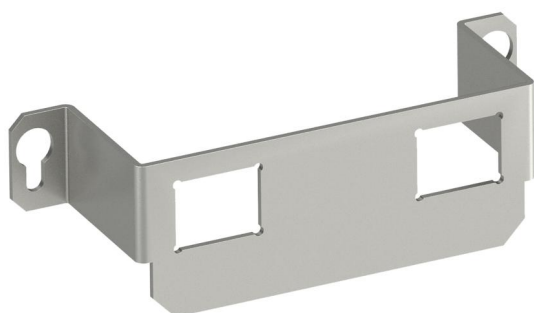
## Mounting support, 2 x type C

Item number: 7407848



Mounting support to accept two data connection modules of the following types:  
Brand-Rex: shielded; EKU: E-Stone; Dätwyler: KS-T, MS-K and KU-T module;  
R&M: Snap-In and Keystone; Rutenbeck: UM and UMflex; SETEC: MKJ, UKJ  
and XKJ; Siemon TERA; Telegärtner: AMJ and UMJ.

Dimensions of a mounting opening in mm: 19.30 x 14.80.  
Suitable for GE2 / UDHome2 installation unit without floor covering recess.



A2 Stainless steel

### Master data

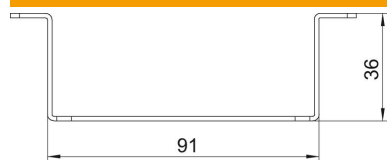
Item number	7407848
Type	MTGE2 2C
Description 1	Mounting plate
Description 2	with 2x hole pattern Type C
Manufacturer	OBO
Dimension	116x36x34
Material	Stainless steel
Smallest sales unit	1
Unit of quantity	Piece
Weight	4.7 kg
Weight unit	kg/100 pc.

# Technical data sheet

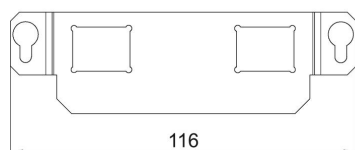
## Mounting support, 2 x type C

Item number: 7407848

### Dimensions



Length 116 mm



### Technical data

Number of installable devices	2
Number of strain reliefs	0
Version for	Support shape
Fastening type	Lockable
Labelling panel	no
Floor covering protection frame	no
Floor plate	no
Lowerable to be flush-floor	no
Seal installation option	no
Installation opening for on-floor tank	no
Decouplable	no
Suitable for raised floor installation	yes
Suitable for screed-flush closed underfloor ducts	yes
Suitable for screed-covered underfloor ducts	yes
Suitable for cavity floor installation	yes
Suitable for underfloor ducts	yes
With floor covering recess	no
Heavy-duty version	no
Depth	36 mm
Strain relief option	yes