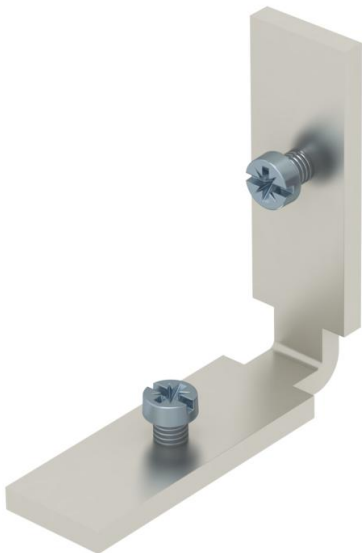


# Technical data sheet

## Connection bracket

Item number: 7402968



For the construction-side creation of a trunking junction as a 90° angle, T piece or crossing. A flushfloor end cover is also required for the creation of a 90° angle (order separately).



**St** Steel

Master data		
Item number	7402968	
Type	OKU VW	
Description 1	Connection bracket	
Description 2	for T- and crossing branch	
Manufacturer	OBO	
Material	Steel	
Smallest sales unit	2	
Unit of quantity	Piece	
Weight	2.92 kg	
Weight unit	kg/100 pc.	
CO2 Footprint (GWP) Cradle-to-Gate	0,0904 kg CO2e / 1 Piece	

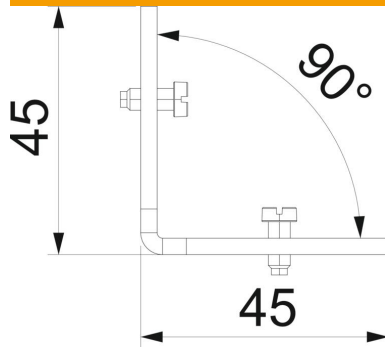
# Technical data sheet

## Connection bracket

Item number: 7402968



### Dimensions



### Technical data

Mounting opening cover	no
Type of accessory	Miscellaneous
Floor plate	no
Cover fastening, locking	no
Seal installation option	no
Decouplable	no
Suitable for expansion joint	no
Suitable for screed-flush closed underfloor ducts	no
Suitable for flushfloor, open underfloor trunking	no
Suitable for screed-covered underfloor ducts	no
Minimum screed height	40
With connection opening	no
With equipotential bonding	no
With overhang	yes
Height-adjustment range, min.	0 mm
Removable cover	no