

# Technical data sheet

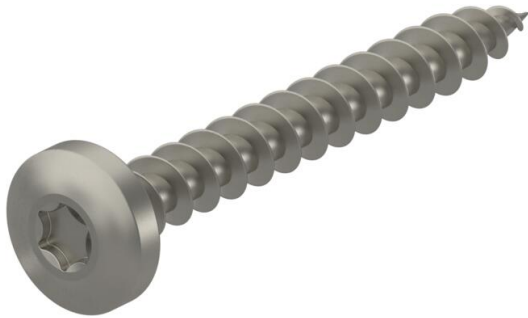
## Chipboard screw, with Torx, panhead, stainless steel

Item number: 3191016



Stainless steel wood screw with lens head and Torx drive for fastenings in interior and exterior areas.

Areas of use: Wood, chipboard, plasterboard panels and plastic anchors.



**A4** Stainless steel

**2B** Bright, treated

### Master data

|                     |                      |
|---------------------|----------------------|
| Item number         | 3191016              |
| Type                | OTSP 4,5x30 A4       |
| Description 1       | Chipboard screw      |
| Description 2       | panhead, TX 20 drive |
| Manufacturer        | OBO                  |
| Dimension           | 4,5x30mm             |
| Material            | Stainless steel      |
| Surface             | Bright, treated      |
| Surface standard    |                      |
| Smallest sales unit | 100                  |
| Unit of quantity    | Piece                |
| Weight              | 0.26 kg              |
| Weight unit         | kg/100 pc.           |

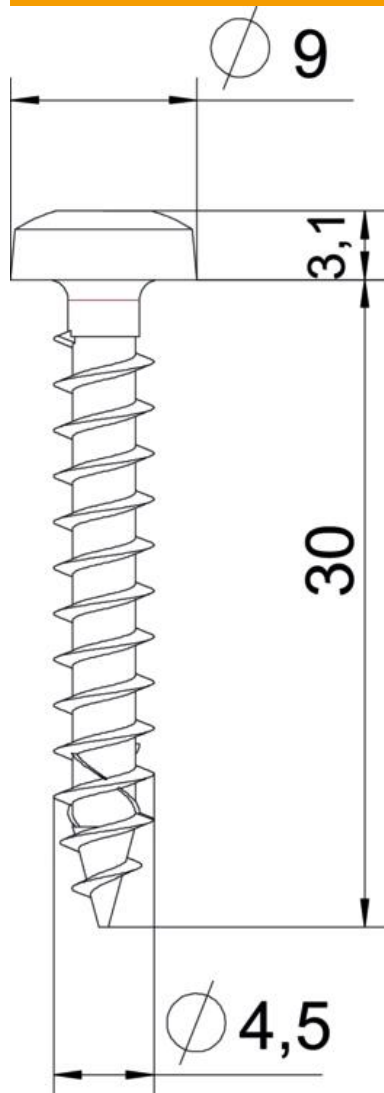
# Technical data sheet

Chipboard screw, with Torx, panhead, stainless steel

Item number: 3191016



## Dimensions



|             |        |
|-------------|--------|
| Length      | 30 mm  |
| Dimension D | 4.5 mm |
| Dimension L | 30 mm  |

## Technical data

|                 |         |
|-----------------|---------|
| Drive size      | TX 20   |
| Hardened        | no      |
| Head diameter   | 9 mm    |
| Head shape      | Panhead |
| Screw system    | Torx    |
| Two-compartment | no      |