

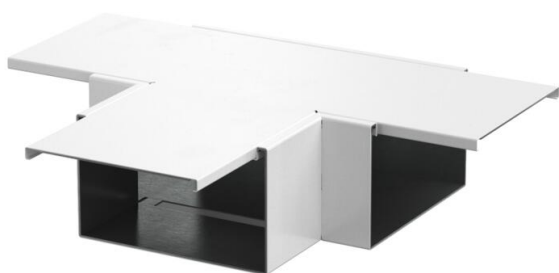
Technical data sheet

T branch piece, duct height 120 mm, pure white

Item number: 7218084



Tee with intumescent fire protection mesh for PYROLINE® Rapid PLM installation duct. Suitable for direct wall and ceiling mounting, mounting below system floors and on support systems. Tool-free joint mounting with PLM SI joint connector. The cover is snapped on without tools, allowing rapid inspection and retroas- signment. The cover overhang allows offset cover mounting for continuous equipotential bonding of the entire duct section.



St

Steel

P

Powder-coated

Master data

Item number	7218084
Type	PLM TB 1220 RW
Description 1	T-branch
Description 2	with fire protection mesh
Manufacturer	OBO
Dimension	600x400x120
Colour	Pure white; RAL 9010
Material	Steel
Surface	Powder-coated
Surface standard	
Smallest sales unit	1
Unit of quantity	Piece
Weight	350 kg
Weight unit	kg/100 pc.
CO2 Footprint (GWP) Cradle-to-Gate	13,1577 kg CO2e / 1 Piece

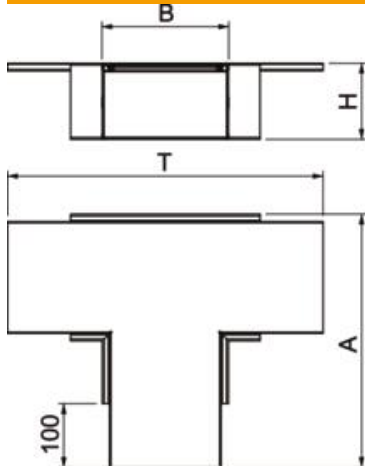
Technical data sheet

T branch piece, duct height 120 mm, pure white

Item number: 7218084



Dimensions



Dimension A	400 mm
Dimension B	200 mm
Dimension H	120 mm
Dimension t	600 mm

Technical data

Number of flammable sides	4
Classification EI – installation duct	90
With perforation	yes
Usable cross-section	18500 mm ²
Partitions possible	yes
Jacketing	Steel