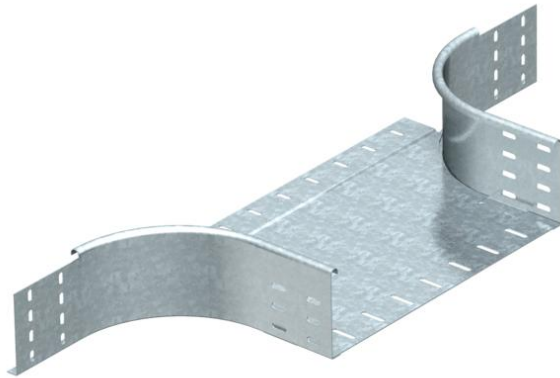


Technical data sheet

Add-on tee 110 FT SOMY

Item number: 7196178



Add-on tee for horizontal and vertical use. For all cable tray types of 110 mm side height.
Fitting in round design. The interior radius of the fitting is 150 mm. Fastening materials should be ordered separately.

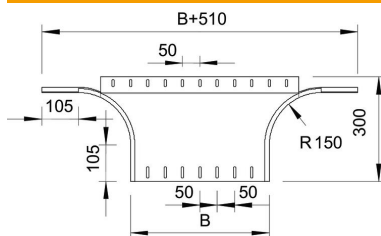


- St** Steel
- FT SO** Hot-dip galvanised 85 µm

Master data

| | |
|---------------------|--------------------------|
| Item number | 7196178 |
| Type | RAA 160 FT SO |
| Description 1 | Add-on tee |
| Description 2 | round version |
| Manufacturer | OBO |
| Dimension | 110x600 |
| Material | Steel |
| Surface | Hot-dip galvanised 85 µm |
| Surface standard | DIN EN ISO 1461 |
| Smallest sales unit | 1 |
| Unit of quantity | Piece |
| Weight | 337 kg |
| Weight unit | kg/100 pc. |

Dimensions



| | |
|-------------|--------|
| Width | 600 mm |
| Height | 110 mm |
| Dimension B | 600 mm |

Technical data sheet

Add-on tee 110 FT SOMY

Item number: 7196178



Technical data

| | |
|---|------------|
| Bend (angle) | 90° |
| Change of direction | Horizontal |
| Type of connector, cable support system | Screwed |