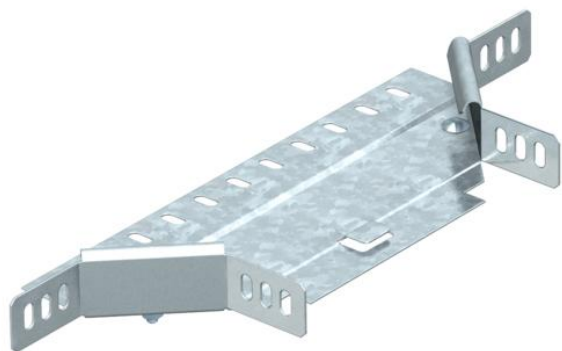


# Technical data sheet

## Add-on tee 35 FT

Item number: 7120117



Add-on tee for horizontal and vertical use. For all cable tray types of 35 mm side height.  
The fitting is shipped in an unmounted state.  
Including appropriate fastening material.



**St** Steel

**FT** Hot-dip galvanised

### Master data

Item number	7120117
Type	RAA 310 FT
Description 1	Add-on tee
Description 2	with 2 angle connectors
Manufacturer	OBO
Dimension	35x100
Material	Steel
Surface	Hot-dip galvanised
Surface standard	DIN EN ISO 1461
Smallest sales unit	1
Unit of quantity	Piece
Weight	33 kg
Weight unit	kg/100 pc.

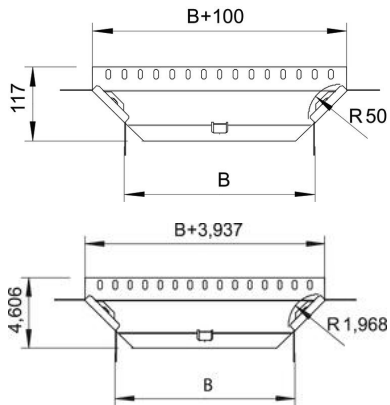
# Technical data sheet

## Add-on tee 35 FT

Item number: 7120117



### Dimensions



Width	100 mm
Width	4 in
Height	35 mm
Height	1 in
Dimension B	100 mm
Dimension R	50 mm

### Technical data

Bend (angle)	90°
Connector version	Supplied connectors
Maintain electrical functions	no
Material thickness, floor plate	1 mm
NATO hole pattern	no
Change of direction	Horizontal
Rustproof steel, pickled	no
Wide-span version	no
Type of connector, cable support system	Screwed
Rail thickness	1.25 mm