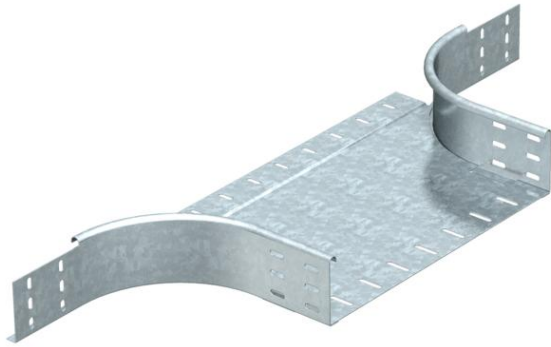


Technical data sheet

Add-on tee 85 FT

Item number: 7122403



Add-on tee for horizontal and vertical use. For all cable tray types of 85 mm side height.
Fitting in round design. The interior radius of the fitting is 150 mm. Fastening materials should be ordered separately.

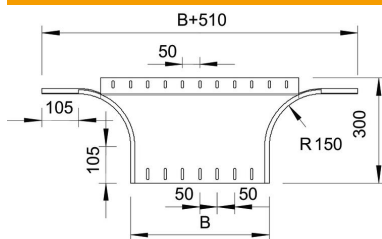


| | |
|-----------|--------------------|
| St | Steel |
| FT | Hot-dip galvanised |

Master data

| | |
|---------------------|--------------------|
| Item number | 7122403 |
| Type | RAA 840 FT |
| Description 1 | Add-on tee |
| Description 2 | round version |
| Manufacturer | OBO |
| Dimension | 85x400 |
| Material | Steel |
| Surface | Hot-dip galvanised |
| Surface standard | DIN EN ISO 1461 |
| Smallest sales unit | 1 |
| Unit of quantity | Piece |
| Weight | 250 kg |
| Weight unit | kg/100 pc. |

Dimensions



| | |
|-------------|--------|
| Width | 400 mm |
| Width | 16 in |
| Height | 85 mm |
| Height | 3 in |
| Dimension B | 400 mm |
| Dimension R | 150 mm |

Technical data sheet

Add-on tee 85 FT

Item number: 7122403



Technical data

| | |
|---|--------------------|
| Bend (angle) | 90° |
| Connector version | Without connectors |
| Maintain electrical functions | no |
| Material thickness, floor plate | 1.5 mm |
| NATO hole pattern | no |
| Change of direction | Horizontal |
| Rustproof steel, pickled | no |
| Wide-span version | no |
| Type of connector, cable support system | Screwed |
| Rail thickness | 1.25 mm |