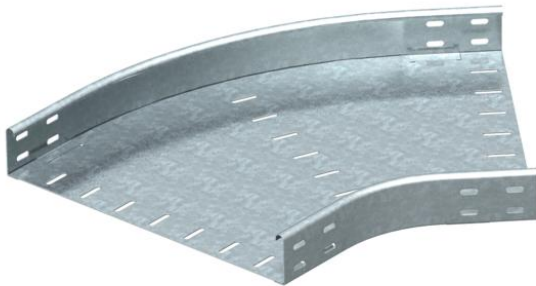


# Technical data sheet

45° bend 60 FT

Item number: 7066600



45° bend, horizontal, for all cable tray types of 60 mm side height.  
Fitting in round design. The interior radius of the fitting is 150 mm. Fastening materials should be ordered separately.



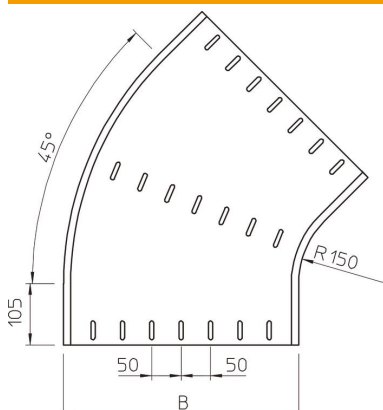
**St** Steel

**FT** Hot-dip galvanised

## Master data

Item number	7066600
Type	RB 45 660 FT
Description 1	45° bend
Description 2	horizontal, round type
Manufacturer	OBO
Dimension	60x600
Material	Steel
Surface	Hot-dip galvanised
Surface standard	DIN EN ISO 1461
Smallest sales unit	1
Unit of quantity	Piece
Weight	515.6 kg
Weight unit	kg/100 pc.

## Dimensions



Width	600 mm
Width	24 in
Height	60 mm
Height	2 in
Dimension B	600 mm
Dimension R	150 mm

# Technical data sheet

45° bend 60 FT

Item number: 7066600



## Technical data

Bend (angle)	45°
Connector version	Without connectors
Maintain electrical functions	no
Mounting perforation in base	no
NATO hole pattern	no
Change of direction	Horizontal
Rustproof steel, pickled	no
Side perforation	no
Wide-span version	no
Type of connector, cable support system	Screwed