

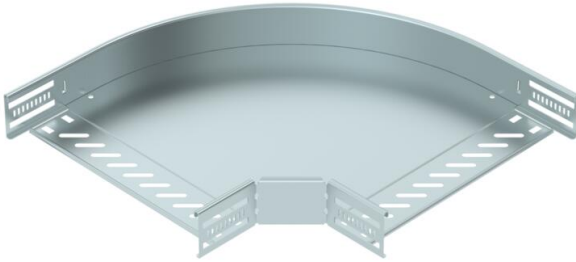
# Technical data sheet

90° bend 60, EcoLine, FS

Item number: 6036579



90° bend made from CO<sub>2</sub>-reduced steel, for the creation of a horizontal branch. Fitting for latchable and screwable cable trays, side height 60 mm. Screwless mounting with double clamps or screw connection with FRS truss-head screws and M6 combination nuts. Can be used in indoor areas. Fastening material must be ordered separately.



**St** Steel, CO2 reduced

**FS** Strip galvanized

## Master data

Item number	6036579
Type	RB 90 630 FS ECO
Description 1	90° bend
Description 2	for cable tray, horizontal
Available from	06.03.2026
Manufacturer	OBO
Dimension	60x300
Colour	zinc
Material	Steel, CO2 reduced
Surface	Strip galvanized
Surface standard	DIN EN 10346
Smallest sales unit	1
Unit of quantity	Piece
Weight	137 kg
Weight unit	kg/100 pc.
CO2 Footprint (GWP) Cradle-to-Gate	2,3079 kg CO2e / 1 Piece

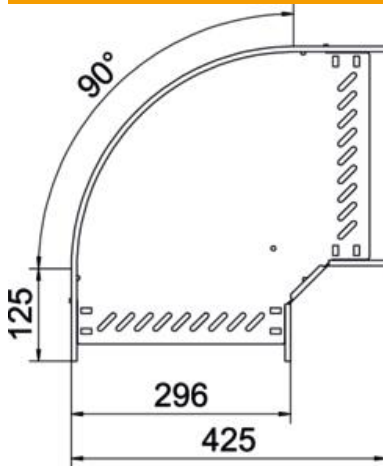
# Technical data sheet

90° bend 60, EcoLine, FS

Item number: 6036579



## Dimensions



Width	300 mm
Height	60 mm
Plate thickness	0.8 mm
Dimension B	300 mm

## Technical data

Bend (angle)	90°
Connector version	Integrated connector
Type	Bend, rigid
Maintain electrical functions	yes
Material thickness, floor plate	0.8 mm
Mounting perforation in base	yes
NATO hole pattern	no
Change of direction	Horizontal
Rustproof steel, pickled	no
Side perforation	yes
Permitted temperature range, max.	120 °C
Permitted temperature range, min.	-20 °C
Wide-span version	no
Type of connector, cable support system	screwed/clamped
Recommended quantity of bolts	14 St.
Rail thickness	1.25 mm