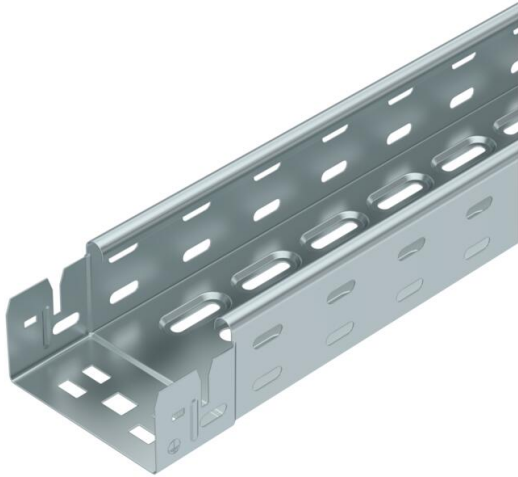


# Technical data sheet

## Cable tray RKS-Magic® 60, EcoLine, FS

Item number: 6047609



Cable tray made from CO<sub>2</sub>-reduced steel, with integrated quick-fastening system. Usable length 3,000 mm. With continuous side perforation of 7 x 20 mm for the installation of connection and mounting components. 11 mm perforation in the base for direct threaded rod suspension. Magnetic shield insulation without cover 20 dB, with cover 50 dB.



- St** Steel, CO2 reduced
- FS** Strip galvanized

### Master data

Item number	6047609
Type	RKSM 610 FS ECO
Description 1	Cable tray RKSM
Description 2	Magic, quick connector
Available from	06.03.2026
Manufacturer	OBO
Dimension	60x100x3050
Colour	zinc
Material	Steel, CO2 reduced
Surface	Strip galvanized
Surface standard	DIN EN 10346
Smallest sales unit	3
Unit of quantity	Metre
Weight	132.131 kg
Weight unit	kg/100 m
CO2 Footprint (GWP) Cradle-to-Gate	1,6661 kg CO2e / 1 Meter

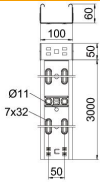
# Technical data sheet

Cable tray RKS-Magic® 60, EcoLine, FS

Item number: 6047609



## Dimensions



Dimension	60x100
Length	3,050 mm
Width	100 mm
Height	60 mm
Plate thickness	0.75 mm
Dimension B	100 mm
Dimension y	50 mm
Dimension W	100 mm

## Technical data

Connector version	Integrated connector
Mounting system fastening type	Floor Ceiling Wall
Base perforation	1
Maintain electrical functions	yes
Mounting perforation in base	yes
NATO hole pattern	no
Usable cross-section	58 cm <sup>2</sup>
Usable cross-section	5800 mm <sup>2</sup>
Rustproof steel, pickled	no
Side perforation	yes
Wide-span version	no

## Loads

Insertable support spacings, min.	1 m
Insertable support spacings, max.	2.5 m
NEMA load class	8AA
Support spacing 1.0 m	1.2 kN/m
Support spacing 1.5 m	0.9 kN/m
Support spacing 2.0 m	0.6 kN/m
Support spacing 2.5 m	0.4 kN/m