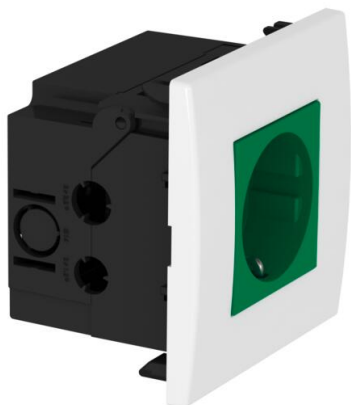


Technical data sheet

AR45 socket unit, single

Item number: 6119402



Pre-terminated socket unit without labelling panel, suitable for installation in Rapid 80 device installation trunking systems.

Socket unit, consisting of:

- Accessory mounting box, single, type 71GD8-2
 - Protective contact socket, single, 0° connection direction, colour: see table
 - Cover frame AR45, single, without labelling panel, colour: pure white
- For installation in Rapid 80 device installation trunking and ISS service poles.

PC Polycarbonate

Master data

Item number	6119402
Type	SDE-RW D0GN1
Description 1	Socket unit
Description 2	for single Modul 45
Manufacturer	OBO
Dimension	84x84x59mm
Colour	Mint green; RAL 6029
Material	Polycarbonate
Smallest sales unit	1
Unit of quantity	Piece
Weight	10.7 kg
Weight unit	kg/100 pc.
CO2 Footprint (GWP) Cradle-to-Gate	0,5545 kg CO2e / 1 Piece

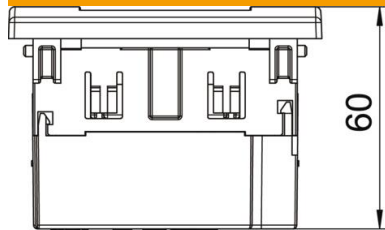
Technical data sheet

AR45 socket unit, single

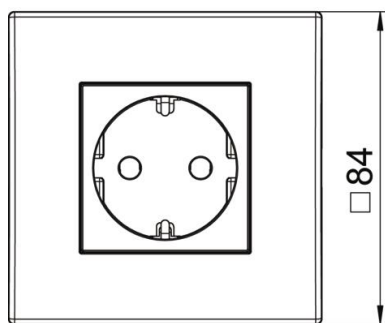
Item number: 6119402



Dimensions



Width	84 mm
Height	84 mm



Technical data

Cover	Complete housing
Closable	no
Connection type	Screwless terminal
Number of units	1
Number of modules (for modular construction)	0
Number of switchable sockets	0
Number of poles	2
Printed label/coding	Without printing
Version for	Single 0°
Surface version	Matt
Version for	SCHUKO
Ejection mechanism	no
Fastening type	Lock
Labelling panel	no
increased touch protection	yes
Error current protection	no
For more difficult conditions (according to VDE)	no
Power reserve	no
Halogen-free	yes
Insulated installation	no
Hinged cover	no
Coding	no
Warning light	no
With on/off switch	no
With fine-wire fuse	no

Technical data sheet

AR45 socket unit, single

Item number: 6119402



Technical data

With functional lighting	no
With orientation lighting	no
Mounting type	Device installation duct
Nominal voltage	250 V
Nominal current	16 A
Protection rating	Other
Special power supply	Without special power supply
Socket version	Protective contact
Socket angle	0°
Depth	60 mm
Transparent	no
Rotated central insert	no
Surge protection	no