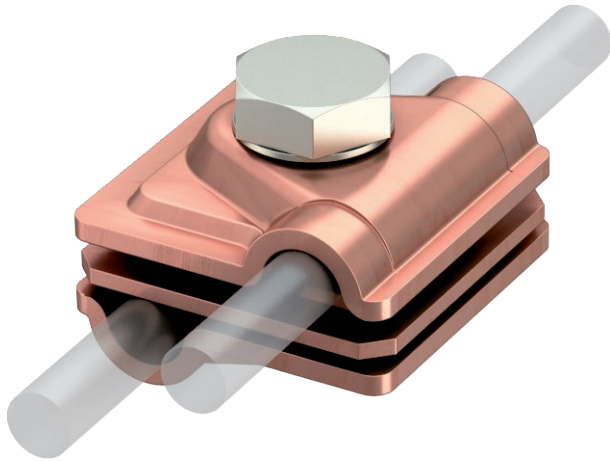


Technical data sheet

Variable earthing connector Rd 6-8 / 8-10 mm

Item no. 5311417



- For T, intersection and parallel connections with adapter plates
- Quick mounting using an M10 x 30 bolt, made from rustproof stainless steel A2
- With sprung washer to DIN 137
- Corresponds to the requirements of VDE 0185-305 (IEC 62305)



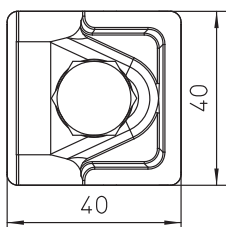
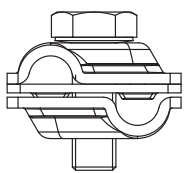
Cu Copper

Product description

Master data

Item no.	5311417
Type	249 6-10 CU
Description 1	Quick connector
Description 2	Vario
Dimension	6-10mm
Material	Copper
Material symbol	Cu
Weight	14,54 kg/100 pc.

Technical data



Dimension A	40,00 mm
Type of fastening screw	Hex set screw
Type of connector	Multipurpose connection clamp
Lightning current carrying capacity	H/100 kA
Suitable for connection	Round conductor Rd 8-10 / Rd 8-10
Fit	RD 6-8 / 8-10 mm
Intermediate plate	<input type="checkbox"/>