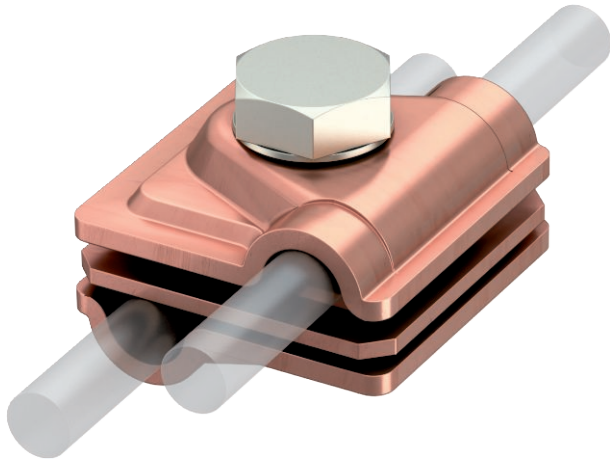


Technical data sheet

Vario quick connector Rd 6-8 / Rd 6-8 mm

Item no. 5311407



- For T, intersection and parallel connections with adapter plates
- Quick mounting using an M10 x 30 bolt, made from rustproof stainless steel (A2)
- With sprung washer to DIN 137
- Corresponds to the requirements of VDE 0185-305 (IEC 62305)

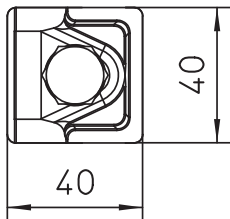
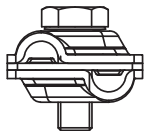
Cu Copper

Product description

Master data

| | |
|-----------------|------------------|
| Item no. | 5311407 |
| Type | 249 6-8 CU |
| Description 1 | Quick connector |
| Description 2 | Vario |
| Dimension | 6-8mm |
| Material | Copper |
| Material symbol | Cu |
| Weight | 12,71 kg/100 pc. |

Technical data



| | |
|-------------------------------------|---------------------------------|
| Dimension A | 40,00 mm |
| Type of fastening screw | Hex set screw |
| Type of connector | Multipurpose connection clamp |
| Lightning current carrying capacity | H/100 kA |
| Suitable for connection | Round conductor Rd 6-8 / Rd 6-8 |
| Fit | RD 6-8 / 6-8 mm |
| Intermediate plate | <input type="checkbox"/> |