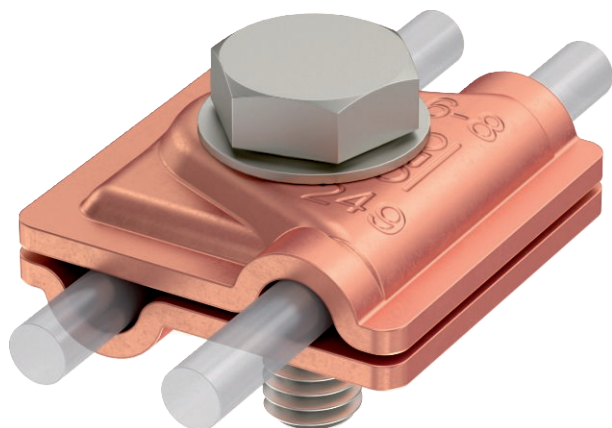


Technical data sheet

Vario quick connector Rd 6-8 / Rd 6-8 mm

Item no. 5311421



- For T, intersection and parallel connections
- Quick mounting using an M10 x 30 bolt, made from rustproof stainless steel (A2)
- Meets the requirements of VDE 0185-305 (IEC 62305)

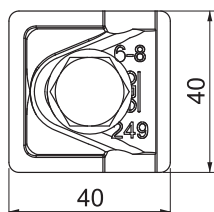
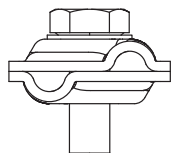


Cu Copper

Master data

Item no.	5311421
Type	249 6-8 CU CH
Description 1	Quick connector
Description 2	Vario
Dimension	6-8 mm
Material	Copper
Material symbol	Cu
Smallest sales unit (VG)	10 Piece
Weight	9,95 kg/100 pc.

Technical data



Dimension A	40,00 mm
Type of fastening screw	Hex set screw
Type of connector	Multipurpose connection clamp
Lightning current carrying capacity	H/100 kA
Suitable for connection	Round conductor Rd 6-8 / Rd 6-8
Fit	RD 6-8 / 6-8 mm
Intermediate plate	<input type="checkbox"/>