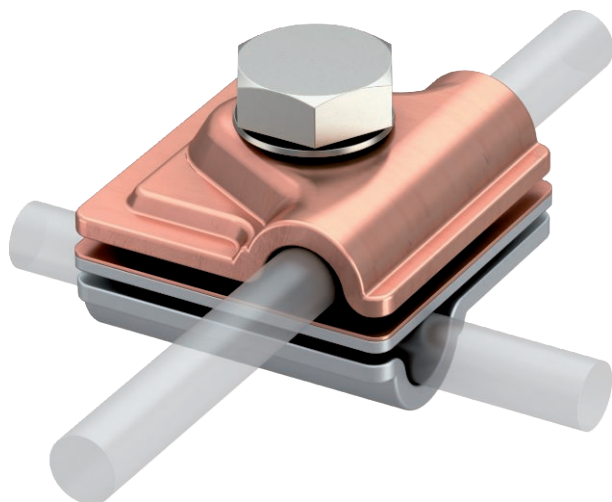


# Technical data sheet

## Variable bi-metal quick connector

Item no. 5311535



- Intermediate plate, copper/aluminium, top section copper and aluminium
- For T, cross and parallel connectors
- Quick installation using hexagonal bolt M10 x 30, high-grade stainless steel
- With spring washer according to DIN 137
- Conforms to the requirements according to DIN VDE 0185-305 (IEC 62305)



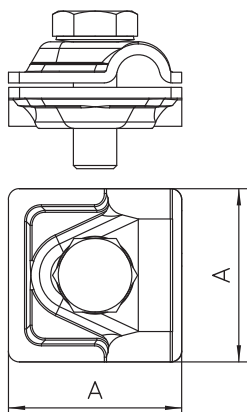
**Cu** Copper

### Product description

### Master data

Item no.	5311535
Type	249 8-10 ZV
Description 1	Quick connector
Description 2	vario
Dimension	8-10mm
Material	Copper
Material symbol	Cu
Weight	14,22 kg/100 pc.

### Technical data



Dimension A	44,00 mm
Type of fastening screw	Hex set screw
Type of connector	Multipurpose connection clamp
Lightning current carrying capacity	H/100 kA
Suitable for connection	Round conductor Rd 8-10 / Rd 8-10
Fit	Rd 8-10 mm
Material lower part	Cu
Material upper part	Al
Intermediate plate	<input checked="" type="checkbox"/>