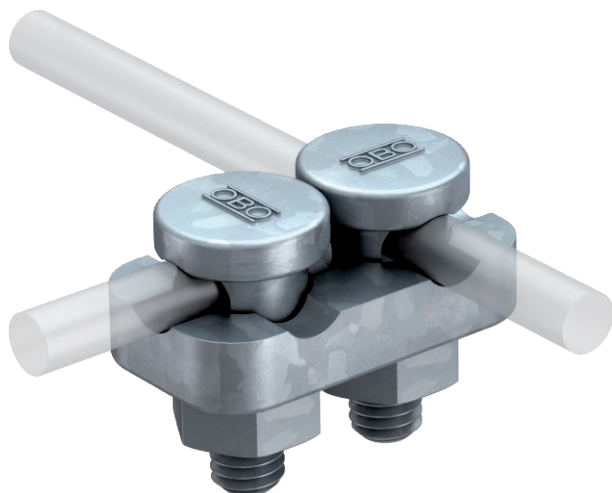


Technical data sheet

Connector Rd 8–10 mm, double

Item no. 5304202



- With 2 fix contact clamping screws, nut and serrated washer
- Including pre-mounted connecting pressure piece, die-cast zinc or copper-plated die-cast zinc
- Conforms to the requirements according to DIN VDE 0185-305 (IEC 62305)



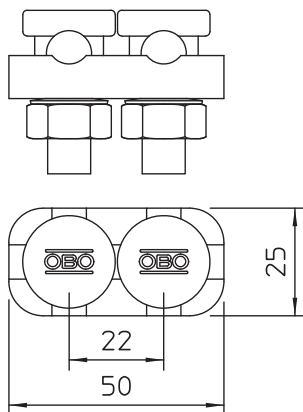
- St** Steel
- FT** Hot-dip galvanised

Product description

Master data

Item no.	5304202
Type	5002 DIN-FT
Description 1	Connection terminal
Description 2	for two round conductors
Dimension	8-10mm
Material	Steel
Material symbol	St
Surface	Hot-dip galvanised
Surface to DIN	DIN EN ISO 1461
Surface symbol	FT
Weight	14,24 kg/100 pc.

Technical data



Type of fastening screw	Clamping screw
Type of connector	Connector
Lightning current carrying capacity	H/100 kA
Suitable for connection	Round conductor Rd 8–10 / Rd 8–10
Fit	Rd 8-10 mm
Intermediate plate	<input type="checkbox"/>