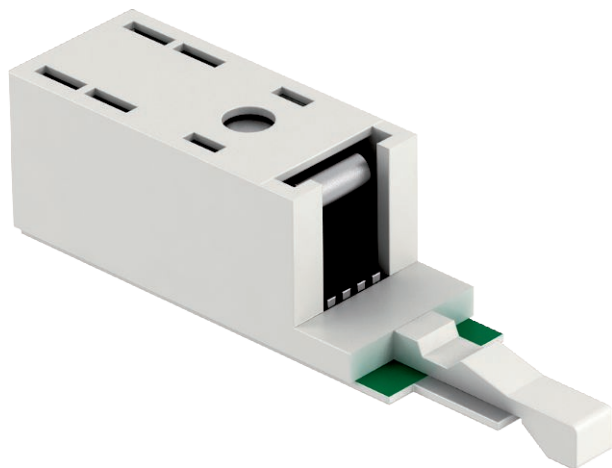


# Technical data sheet

## Combination protection device LSA BF 180

Item no. 5084024



LSA basic and fine protection, for application in MCR systems

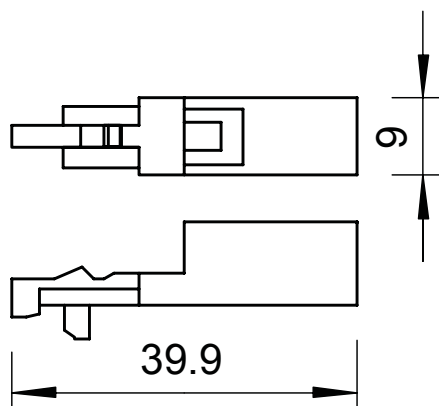
- Basic and fine protection
- Coarse protection using fail-safe technology.
- With PTC protection components against overcurrent.
- Max. voltage: 180 V

Application: Directly on LSA-Plus separating strip or connection rails with earthing rail (e.g. OBO LSA-A-LEI (5084 00 8) or OBO LSA-T-LEI (5084 01 2), and OBO LSA-E (5084 03 2))

Combination protection device for a two-core



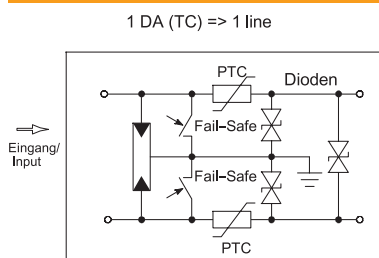
### Dimensions



### Master data

Item no.	5084024
Type	LSA-BF-180
Description 1	Combined protection device
Description 2	for LSA Plus
Dimension	180V
Smallest sales unit (VG)	1 Piece
Weight	0,50 kg/100 pc.

### Technical data



Category	Type 1+2+3 / D1+C2+C1
SPD to IEC 61643-21	Class I+II+III / D1+C2+C1
Version	Basic and fine protection
Number of poles	2
Total discharge current (8/20)	5 kA
Total discharge current (10/350)	0,5 kA
Maximum continuous voltage AC	120,00 V
Maximum continuous voltage DC	180,00 V
Insulation resistance	> 1 GΩ
Capacity (wire-wire)	< 50 pF
Capacity (wire-earth)	< 50 pF
Lightning protection zone LPZ	0-3

# Technical data sheet

## Combination protection device LSA BF 180

Item no. 5084024



### Technical data

Rated current	0,12 A
Nominal load current AC	0,08 A
Nominal load current DC	0,12 A
Installation type	LSA-Plus, connectable
Testing standard	IEC 61643-21
Protection rating	IP20
Protection level wire-wire	<300 V
Protection level wire-earth	<300 V
Series resistance per wire	10 $\Omega$ $\pm$ 10 %
Connection system	Other
Impulse durability wire-wire	C2: 5 kV / 2,5 kA (8/20 $\mu$ s)
Impulse durability wire-earth	C2: 5 kV / 2,5 kA (8/20 $\mu$ s)
Temperature range	-40-+80 °C