

# Technical data sheet

## TP support / wall and support bracket FT

Item number: 6364683



TP support/bracket for fastening to horizontal concrete ceilings and walls.  
If the profile is fastened directly to the ceiling or the profile is screwed together as head reinforcement, then, for reasons of stability, always use the spacer, type DS 4.



|    |                    |
|----|--------------------|
| St | Steel              |
| FT | Hot-dip galvanised |

### Master data

|                                    |                             |
|------------------------------------|-----------------------------|
| Item number                        | 6364683                     |
| Type                               | TPSA 195 FT                 |
| Description 1                      | TP wall and support bracket |
| Description 2                      | use as support and bracket  |
| Manufacturer                       | OBO                         |
| Dimension                          | B195mm                      |
| Colour                             | zinc                        |
| Material                           | Steel                       |
| Surface                            | Hot-dip galvanised          |
| Surface standard                   | DIN EN ISO 1461             |
| Smallest sales unit                | 1                           |
| Unit of quantity                   | Piece                       |
| Weight                             | 40 kg                       |
| Weight unit                        | kg/100 pc.                  |
| CO2 Footprint (GWP) Cradle-to-Gate | 0,9428 kg CO2e / 1 Piece    |

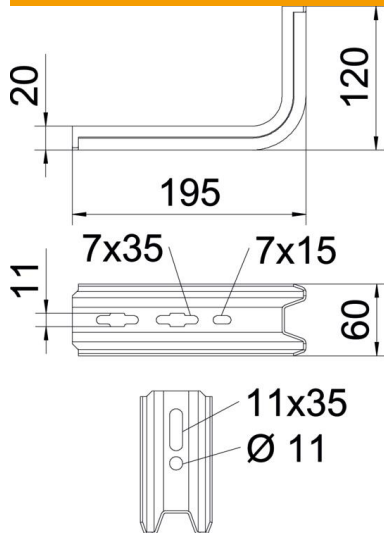
# Technical data sheet

## TP support / wall and support bracket FT

Item number: 6364683



### Dimensions



|             |        |
|-------------|--------|
| Length      | 195 mm |
| Width       | 60 mm  |
| Height      | 120 mm |
| Dimension B | 60 mm  |
| Dimension H | 120 mm |
| Dimension L | 195 mm |

### Technical data

|                               |                          |
|-------------------------------|--------------------------|
| Version for                   | Wall and support bracket |
| F in kN                       | 1 kN                     |
| Maintain electrical functions | no                       |
| for width max.                | 150 mm                   |
| for width min.                | 150                      |
| Rustproof steel, pickled      | no                       |

### Characteristic anchor load values for TP bracket

| Wall fastening |                    |      |      |      |
|----------------|--------------------|------|------|------|
| Anchor type    | Max. load [kN]     |      |      |      |
|                | Bracket width [mm] |      |      |      |
|                | 145                | 195  | 245  | 345  |
| BZ3 10x90/0-30 | 1.3                | 0.93 | 0.60 | 0.68 |

The load capacity values increase considerably when used in uncracked concrete. The stated values are based on cracked concrete of compressive strength C20/25. Please comply with the installation conditions of ETA(anchors).