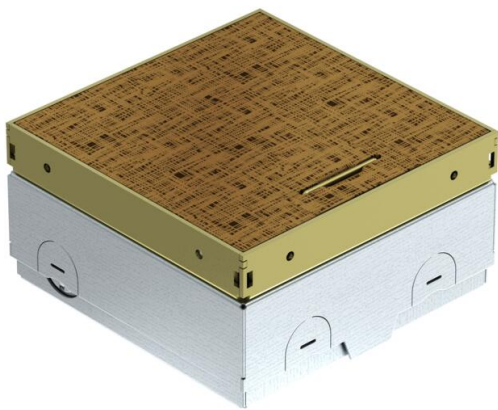


Technical data sheet

UDHOME-ONE floor socket, without floor covering recess,
BS socket, decorative plate: hammer blow
Item number: 7368246



Square floor socket for use in dry-care systems and screed floors in indoor areas. Installation housing with pre-marked insertion openings for pipes (M20/M25). Cover adjustable to top edge of floor covering using four height-adjustment supports. The minimum installation depth is 75 mm, the height-adjustment range +30 mm. Frame and cover made of brass and visible in the floor covering. Cover with decorative plate hammer blow. A switched BS socket as well as a data technology support for 2 data sockets of type LJU6C are included in the delivery.



Master data		
Item number	7368246	
Type	UDHOME-ONE M3 BS	
Description 1	Floor socket	
Description 2	with BS-socket, Hammer blow	
Manufacturer	OBO	
Dimension	140x140x75	
Smallest sales unit	1	
Unit of quantity	Piece	
Weight	220 kg	
Weight unit	kg/100 pc.	
CO2 Footprint (GWP) Cradle-to-Gate	8,9935 kg CO2e / 1 Piece	

Technical data sheet

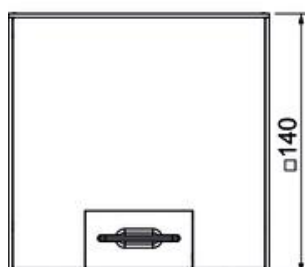
UDHOME-ONE floor socket, without floor covering recess,
BS socket, decorative plate: hammer blow
Item number: 7368246



Dimensions



Length	140 mm
Width	140 mm
Height	75 mm



Technical data

Number of sockets according to the British standard	1
Cable outlet version	Swivellable cord outlet
Equipment	Single BS socket
Floor covering protection frame	no
Floor care	Dry
Seal installation option	no
Application when used	6.101.1 Dry floor care
Application when unused	6.101.1 Dry floor care
Floor height, max.	105 mm
Floor height, min.	75 mm
Suitable for raised floor installation	yes
Suitable for screed-flush closed underfloor ducts	no
Suitable for screed-covered underfloor ducts	no
Suitable for cavity floor installation	yes
Suitable for wet care	no
Suitable for underfloor ducts	no
Device support to accept mounting boxes	no
With floor covering recess	no
Protection rating (IP) when used	IP20
Protection rating (IP) when unused	IP40
Protection rating IK code	IK10
Vertical load, large area	to 15,000 N
Vertical load, small area	to 3,000 N
Opening mechanism	Handle