

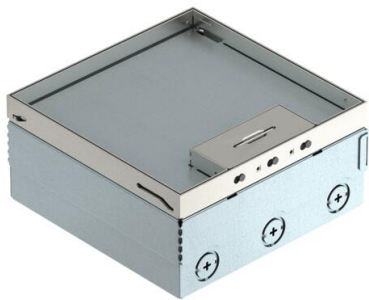
# Technical data sheet

UDHOME4 floor box, with universal support UT3, triple VDE, stainless steel  
Item number: 7427200



Square floor box for use in dry-cleaned cavity and screed floors in indoor areas. Installation housing with pre-marked insertion openings for pipes (M25). With two UT3 universal supports and a triple socket. Cover adjustable to top edge of floor covering using four height-adjustment supports. The minimum installation depth is 95 mm, the height-adjustment range + 30 mm. The scope of delivery contains two UT3 universal supports, a triple power socket with cover plate and two individual cover plates for accessories with support ring.

Surfaces visible in the floor covering made of stainless steel.



A2 Stainless steel

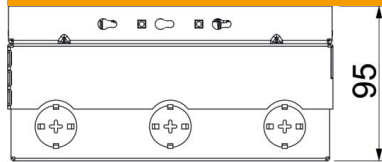
Master data		
Item number	7427200	
Type	UDHOME4 2V V	
Description 1	Floor box, complete	
Description 2	3way protective contact socket	
Manufacturer	OBO	
Material	Stainless steel 1.4301	
Smallest sales unit	1	
Unit of quantity	Piece	
Weight	380 kg	
Weight unit	kg/100 pc.	
CO2 Footprint (GWP) Cradle-to-Gate	18,2067 kg CO2e / 1 Piece	

# Technical data sheet

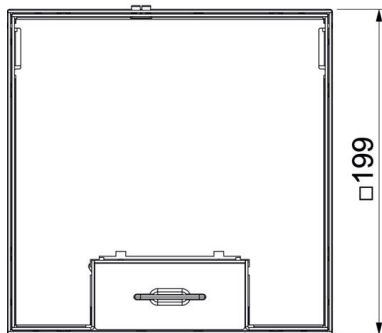
UDHOME4 floor box, with universal support UT3, triple VDE, stainless steel  
Item number: 7427200



## Dimensions



Length	202 mm
Width	202 mm



## Technical data

Number of mounting boxes	2
Version for	Square
Cable outlet version	Swivellable cord outlet
Equipment	2 UT3, triple VDE socket
Floor covering protection frame	no
Cover version	Floor covering recess
Screed height, max.	110 mm
Screed height, min.	95 mm
Floor height, max.	125 mm
Floor height, min.	95 mm
Suitable for raised floor installation	no
Suitable for cavity floor installation	yes
Suitable for wet care	no
Suitable for underfloor ducts	no
Length of external dimensions	199 mm
Length of installation dimensions	202 mm
With floor covering recess	yes
Height-adjustment range, max.	125 mm
Height-adjustment range, min.	95 mm
Protection rating (IP) when used	IP20
Protection rating (IP) when unused	IP40
Protection rating IK code	IK10
Vertical load, large area	to 5,000 N
Vertical load, small area	to 3,000 N
Opening mechanism	Handle
Floor covering thickness	15 mm