

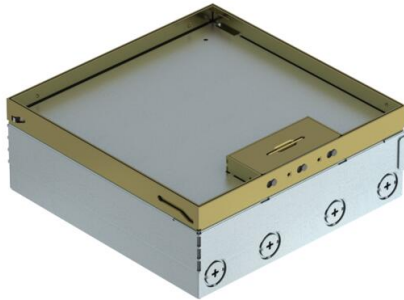
Technical data sheet

UDHOME9 floor box, freely equippable, brass

Item number: 7427328



Square floor box for use in dry-cleaned cavity and screed floors in indoor areas. Installation housing with pre-marked insertion openings for pipes (M25). Empty housing for up to three UT4 universal supports for up to 12 Modul 45 ® devices. Cover adjustable to top edge of floor covering using four height-adjustment supports. The minimum installation depth is 95 mm, the height-adjustment range + 30 mm. Surfaces visible in the floor covering made of brass.



Brass

Master data

Item number	7427328
Type	UDHOME9 2M
Description 1	Floor box, complete
Description 2	empty
Manufacturer	OBO
Material	Brass
Smallest sales unit	1
Unit of quantity	Piece
Weight	482 kg
Weight unit	kg/100 pc.
CO2 Footprint (GWP) Cradle-to-Gate	19,0193 kg CO2e / 1 Piece

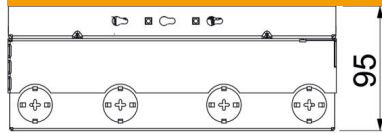
Technical data sheet

UDHOME9 floor box, freely equippable, brass

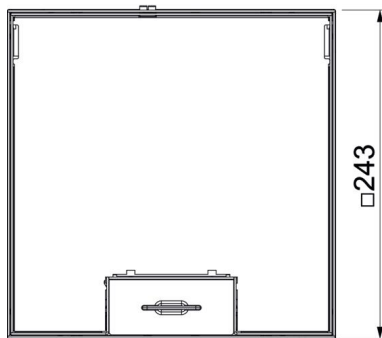
Item number: 7427328



Dimensions



Length	246 mm
Width	246 mm



Technical data

Cable outlet version	Swivellable cord outlet
Equipment	Empty housing
Cover version	Floor covering recess
Screed height, max.	110 mm
Screed height, min.	95 mm
Floor height, max.	125 mm
Floor height, min.	95 mm
Length of external dimensions	243 mm
Length of installation dimensions	246 mm
Height-adjustment range, max.	125 mm
Height-adjustment range, min.	95 mm
Protection rating (IP) when used	IP20
Protection rating (IP) when unused	IP40
Protection rating IK code	IK10
Vertical load, large area	to 5,000 N
Vertical load, small area	to 3,000 N
Opening mechanism	Handle
Floor covering thickness	15 mm