

# Technical data sheet

## Concealed connection box

Item no. 2003136



Connection box for clamping terminals, with cover and cover screw (15 mm), the cover edge is flat, surface is roughened, in conjunction with the cover and cover screws, the connection sockets achieve the VDE test mark to VDE 0606 and are flame-resistant to VDE 0471/DIN 695 Part 2-1, testing temperature 750 °C, protection rating IP20.

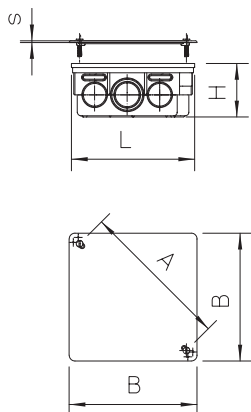


PS Polystyrene

### Master data

Item no.	2003136
Type	UV 250 K
Description 1	Hollow wall, connection box
Description 2	concealed
Dimension	250x250x65
Colour	Black
Material	Polystyrene
Material symbol	PS
Smallest sales unit (VG)	10 Piece
Weight	52,00 kg/100 pc.

### Technical data



Width	250,00 mm
Height	65,00 mm
Length	250,00 mm
Dimension A	328,00 mm
Dimension B	260,00 mm
Dimension H	65,00 mm
Closable	<input type="checkbox"/>
No. of entries	12
Entries	32
Type of entry	Break-out openings for cables and pipes 8 x Ø 21.5 mm and 16 x Ø 28.5 mm and 8 x Ø 34.6 mm
Type of housing penetration	Pre-marking
Version for	Single
Shape	Connection socket/box
Equipment	Without
Cover	Not transparent
Cover fastening	Screwed
Entry from rear	<input type="checkbox"/>
Flame-resistant	acc. to VDE 0471/DIN 695 Part 2-1, test temperature 650°C
Shape	Square
Function maintenance (ETIM)	Without
Floor height	67 mm
Halogen-free	<input type="checkbox"/>

# Technical data sheet

## Concealed connection box

Item no. 2003136



### Technical data

With screening	<input type="checkbox"/>
With nail strap	<input type="checkbox"/>
With bolts	<input type="checkbox"/>
Mounting type	Concealed
Nominal cross section	16,00 mm <sup>2</sup>
Rated voltage	400,00 V
Sealable	<input type="checkbox"/>
Impact-resistant	<input checked="" type="checkbox"/>
Protection rating	IP20
Support	Without
Airtight	<input type="checkbox"/>