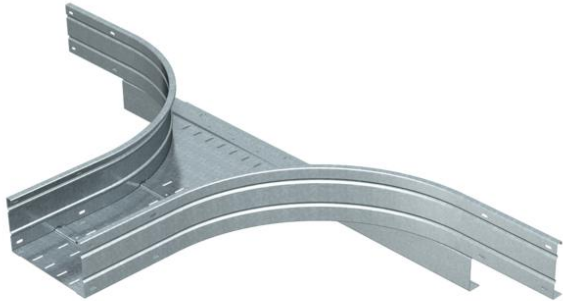


# Technical data sheet

## Add-on tee 160 FT

Item number: 6098827



Add-on tee for horizontal use. For all wide span cable trays of 160 mm side height.  
For further stabilisation, additional supports should be planned for the area of the fittings.



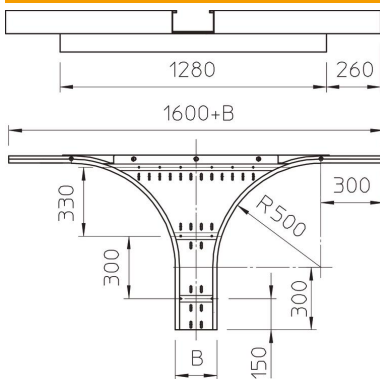
**St** Steel

**FT** Hot-dip galvanised

### Master data

|                     |                              |
|---------------------|------------------------------|
| Item number         | 6098827                      |
| Type                | WRAA 162 FT                  |
| Description 1       | Add-on tee                   |
| Description 2       | for wide span cable tray 160 |
| Manufacturer        | OBO                          |
| Dimension           | 160x200                      |
| Material            | Steel                        |
| Surface             | Hot-dip galvanised           |
| Surface standard    | DIN EN ISO 1461              |
| Smallest sales unit | 1                            |
| Unit of quantity    | Piece                        |
| Weight              | 1865 kg                      |
| Weight unit         | kg/100 pc.                   |

### Dimensions



|                 |        |
|-----------------|--------|
| Width           | 200 mm |
| Height          | 160 mm |
| Plate thickness | 2 mm   |
| Dimension B     | 200 mm |
| Dimension R     | 500 mm |

# Technical data sheet

Add-on tee 160 FT

Item number: 6098827



## Technical data

|   |                    |
|---|--------------------|
| Connector version                       | Without connectors |
| Material thickness, floor plate         | 1.5 mm             |
| NATO hole pattern                       | no                 |
| Rustproof steel, pickled                | no                 |
| Wide-span version                       | yes                |
| Type of connector, cable support system | Screwed            |
| Rail thickness                          | 2 mm               |