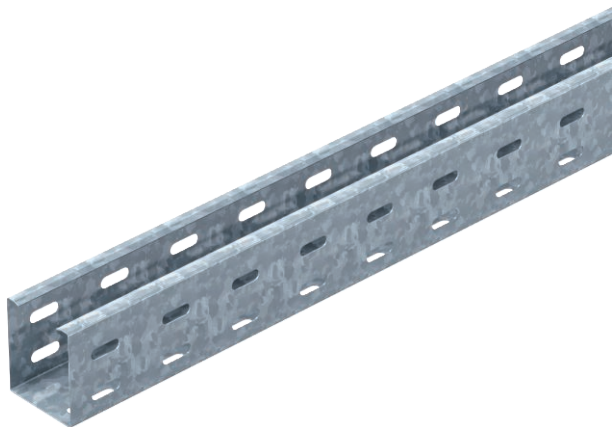


Technical data sheet

Cable tray RKS 60

Item no. 6047602



RKS 60 = Rational cable tray system with 60 mm side height (unbeaded base plate).

Cable tray with continuous bottom and side perforation as well as central holes (Ø11 mm) in the base for additional fastenings.

Magnetic shield insulation without cover 20 dB, with cover 50 dB.

Matching cover with turn buckle: Type AZDMD 50



St Steel

FT Hot-dip galvanised

Product text, scope of delivery | Additional fastening material not included.

Master data

Item no.	6047602
Type	RKS 605 FT
Description 1	Cable tray RKS
Manufacturer	OBO
Dimension	60x50x3000
Material	Steel
Material symbol	St
Surface	Hot-dip galvanised
Surface to DIN	DIN EN ISO 1461
Surface symbol	FT
Smallest sales unit (VG)	3 m
Weight	108,00 kg/100 m

Technical data

Usable cross-section	3.000,00 mm ²
Usable cross-section	30,00 cm ²
Suitable for maintaining electrical function	<input type="checkbox"/>
Connector version	Without connectors
Base perforation	7 x 32
With cover	<input type="checkbox"/>
Mounting perforation in base	<input checked="" type="checkbox"/>
NATO hole pattern	<input type="checkbox"/>
Rustproof steel, pickled	<input type="checkbox"/>
Side perforation	<input checked="" type="checkbox"/>
Wide-span version	<input type="checkbox"/>

Technical data sheet

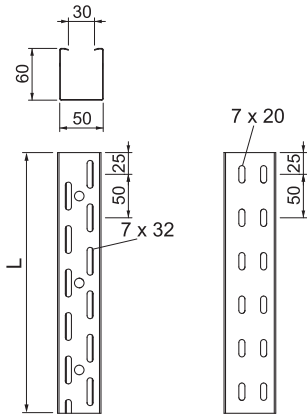
Cable tray RKS 60

Item no. 6047602



Technical data

Dimensions

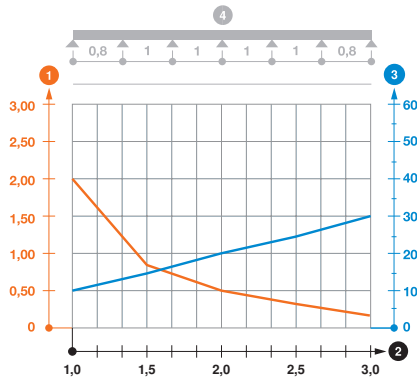


Length	3.000,00 mm
Width	50,00 mm
Height	60,00 mm
Side height	60,00 mm
Dimension L	3.000,00 mm
Plate thickness	0,75 mm

Appr. load:

Support spacing 1.0 m	2,00 kN/m
Support spacing 1.5 m	0,80 kN/m
Support spacing 2.0 m	0,50 kN/m
Support spacing 2.5 m	0,35 kN/m
Support spacing 3.0 m	0,15 kN/m

Load diagram, cable tray, type RKS 60, unbeaded



- 1 Permitted cable tray/ladder load in kN/m without man load
- 2 Support width in m
- 3 Rail bend in mm at permitted kN/m
- 4 Load scheme during testing
- Load curve with cable tray/ladder width in mm
- Strut bend curve according to support width