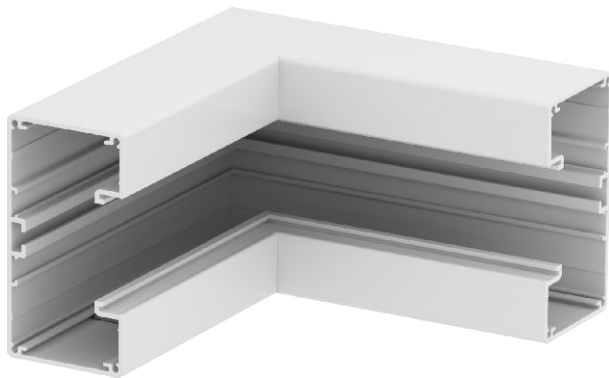


Technical data sheet

Internal corner, for device installation trunking Rapid
45-2 type GA-53100
Item no. 6112430



Alu Aluminium

Corner 90° aluminium for changing the direction of device installation trunking Rapid 45-2 GA...

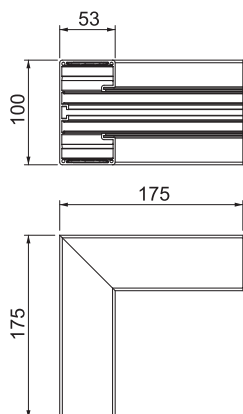
Note:

For anodised device installation trunking and fittings made from aluminium, light colour differences caused by permitted scatter due to the material and process conditions cannot be avoided (according to DIN 17 611). 45 mm devices can be clicked in directly. When using PC/ABS hood fittings, there may be colour differences due to the different materials.

Master data

Item no.	6112430
Type	GA-IS53100RW
Description 1	Internal corner
Description 2	Aluminium, rigid form
Dimension	175x175x100
Colour	Pure white
RAL number	9010
Material	Aluminium
Material symbol	Alu
Smallest sales unit (VG)	1 Piece
Weight	69,20 kg/100 pc.

Technical data



Length	2.000,00 mm
Height	53,00 mm
Number of covers	0
Version for	Base
Shape	Symmetrical
for duct dimension	53 x 100 mm
for duct width	100,00 mm
for trunking height	53,00 mm
Cable retaining clip	<input type="checkbox"/>
Duct connector	<input type="checkbox"/>
Cover mounting type	Internal
Mounting perforation in base	<input type="checkbox"/>
Cover width	45 mm
Cover width 2	0,00 mm
Cover width 3	0,00 mm
Protective film	<input checked="" type="checkbox"/>
Angle range	90,00 - 90,00 °