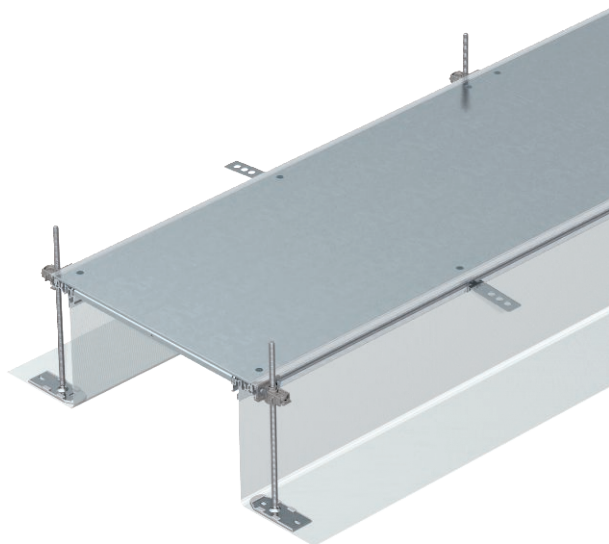


Technical data sheet

Trunking unit, blank, height 40–240 mm

Item no. 7424020



Ready-to-mount trunking unit for cable routing consisting of 3 blanking lids, 2 side profiles with attached flexible side wall made of metal mesh, floor covering contact profiles 4 mm. The scope of supply contains six height-adjustable wall fastening brackets, six screed anchors and three lid butt seals (for nominal trunking widths 200 and 300) or three lid butt supports for nominal trunking width 400 and six cover joint supports for nominal trunking widths 500 and 600. The essential height-adjustment units (observe height-adjustment) for the lid butt supports 400, 500 and 600 are not contained in the scope of delivery and should be ordered separately. On delivery, the trunking lids are screwed on.

With three blanking lids (L = 800 mm).



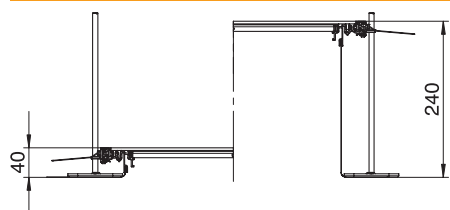
St Steel

FS Strip galvanised

Master data

Item no.	7424020
Type	OKA-G20040240
Description 1	Flush floor trunking unit
Description 2	blank
Dimension	2400x200x240
Material	Steel
Material symbol	St
Surface	Strip galvanised
Surface to DIN	DIN EN 10346
Surface symbol	FS
Smallest sales unit (VG)	2 m
Weight	867,08 kg/100 m

Technical data



Length	2.400,00 mm
Width	200,00 mm
Covers	3,00 pc.
Mounting opening cover	<input type="checkbox"/>
Floor plate	<input type="checkbox"/>
Seal installation option	<input checked="" type="checkbox"/>
Cover fastening, locking	<input type="checkbox"/>
Installation opening for on-floor tank	<input type="checkbox"/>
Decouplable	<input checked="" type="checkbox"/>
Suitable for expansion joint	<input type="checkbox"/>
Mesh wall	<input checked="" type="checkbox"/>
Trunking height	40,00 - 240,00 mm
Cover material thickness	4,00 mm
Minimum screed height	40
With overhang	<input checked="" type="checkbox"/>
With separating retainer	<input type="checkbox"/>
With connection opening	<input type="checkbox"/>
With equipotential bonding	<input type="checkbox"/>
Mounting opening	Without

Technical data sheet

Trunking unit, blank, height 40–240 mm

Item no. 7424020



Technical data

Mounting opening	Without
Height-adjustment range	40,00 - 240,00 mm
Removable cover	<input checked="" type="checkbox"/>