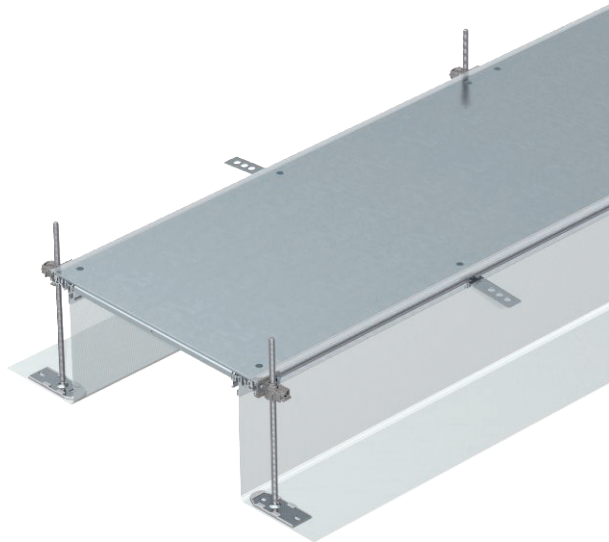


# Technical data sheet

## Trunking unit, blank, height 40–240 mm

Item no. 7424028



Ready-to-mount trunking unit for cable routing consisting of 3 blanking lids, 2 side profiles with attached flexible side wall made of metal mesh, floor covering contact profiles 4 mm. The scope of supply contains six height-adjustable wall fastening brackets, six screed anchors and three lid butt seals (for nominal trunking widths 200 and 300) or three lid butt supports for nominal trunking width 400 and six cover joint supports for nominal trunking widths 500 and 600. The essential height-adjustment units (observe height-adjustment) for the lid butt supports 400, 500 and 600 are not contained in the scope of delivery and should be ordered separately. On delivery, the trunking lids are screwed on.

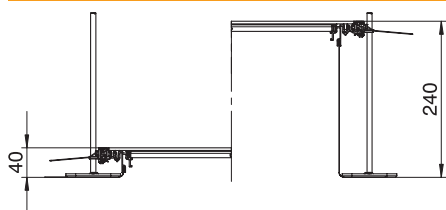


<b>St</b>	Steel
<b>FS</b>	Strip galvanised

### Master data

Item no.	7424028
Type	OKA-G60040240
Description 1	Flush floor trunking unit
Description 2	blank
Dimension	2400x600x240
Material	Steel
Material symbol	St
Surface	Strip galvanised
Surface to DIN	DIN EN 10346
Surface symbol	FS
Smallest sales unit (VG)	2 m
Weight	2.214,17 kg/100 m

### Technical data



Length	2.400,00 mm
Width	600,00 mm
Covers	3,00 pc.
Mounting opening cover	<input type="checkbox"/>
Floor plate	<input type="checkbox"/>
Seal installation option	<input checked="" type="checkbox"/>
Cover fastening, locking	<input type="checkbox"/>
Installation opening for on-floor tank	<input type="checkbox"/>
Decouplable	<input checked="" type="checkbox"/>
Suitable for expansion joint	<input type="checkbox"/>
Mesh wall	<input checked="" type="checkbox"/>
Trunking height	40,00 - 240,00 mm
Cover material thickness	4,00 mm
Minimum screed height	40
With overhang	<input checked="" type="checkbox"/>
With separating retainer	<input type="checkbox"/>
With connection opening	<input type="checkbox"/>
With equipotential bonding	<input type="checkbox"/>
Mounting opening	Without

# Technical data sheet

Trunking unit, blank, height 40–240 mm

Item no. 7424028



## Technical data

Mounting opening	Without
Height-adjustment range	40,00 - 240,00 mm
Removable cover	<input checked="" type="checkbox"/>