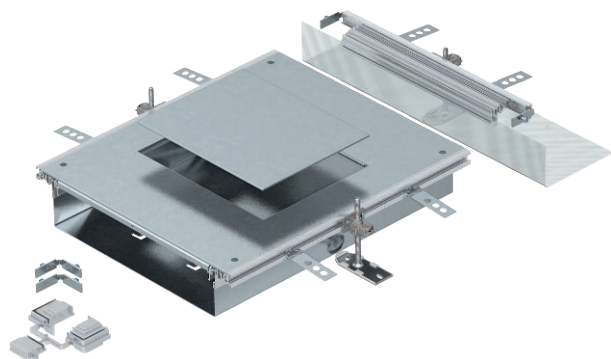


# Technical data sheet

## Extension unit for GES6, height 60–110 mm

Item no. 7424902



Ready-to-mount trunking extension unit with a device installation lid for the installation of a flush-mount unit of nominal size 6, consisting of the trunking base (floor trough with side and floor covering contact profiles), trunking lid with blank mounting opening and a flushfloor end cover. The scope of delivery contains 3 height-adjustable fixing brackets, 3 screed anchors, 1 lid butt support and 1 construction set for 90° angle.

Size of the mounting unit suitable for the installation of a rectangular installation unit of nominal size 6.



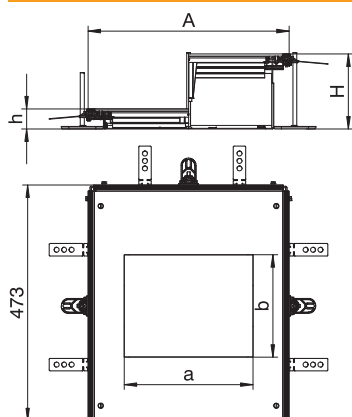
**St** Steel

**FS** Strip galvanised

### Master data

Item no.	7424902
Type	OKA-W A 6050 6
Description 1	Extension unit
Description 2	for OKA-W
Material	Steel
Material symbol	St
Surface	Strip galvanised
Surface to DIN	DIN EN 10346
Surface symbol	FS
Weight	922,00 kg/100 pc.

### Technical data



Length	473,00 mm
Width	400,00 mm
Dimension A	400,00 mm
Dimension a	201,00 mm
Dimension b	253,00 mm
Dimension h	60,00 mm
Covers	1,00 pc.
Mounting opening cover	<input checked="" type="checkbox"/>
Number of mounting openings	1
Seal installation option	<input checked="" type="checkbox"/>
Cover fastening, locking	<input type="checkbox"/>
Installation opening for on-floor tank	<input type="checkbox"/>
Installation opening for flush-mount unit	Rectangular
Decouplable	<input type="checkbox"/>
Suitable for expansion joint	<input type="checkbox"/>
Suitable for screed-flush closed underfloor ducts	<input type="checkbox"/>
Suitable for flushfloor, open underfloor duct	<input checked="" type="checkbox"/>
Suitable for screed-covered underfloor ducts	<input type="checkbox"/>
Trunking height	60,00 - 110,00 mm
Cover material thickness	4,00 mm
Minimum screed height	60
With overhang	<input checked="" type="checkbox"/>
With separating retainer	<input type="checkbox"/>
With connection opening	<input checked="" type="checkbox"/>

# Technical data sheet

Extension unit for GES6, height 60–110 mm

Item no. 7424902



## Technical data

With equipotential bonding	<input type="checkbox"/>
Mounting opening	For service outlet
Nominal size for device installation units	6
Height-adjustment range	60,00 - 110,00 mm
Removable cover	<input checked="" type="checkbox"/>